

An aerial view of a modern, multi-story resort building with a glass and wood facade. The building is surrounded by lush greenery, including a large swimming pool with lounge chairs and umbrellas. The background features a dense forest on a hillside.

VR

KRTSANISI
RESORT RESIDENCE

TABLE OF CONTENT

Overview

About Our Three Ongoing Projects	1
About VR Krtsanisi Resort Residence	3

Location

The Project is Located in the Most Diplomatic, Safe and Ecologically Clean Area of Tbilisi	4
--	---

Development of VR Krtsanisi Resort Residence

The Total Project Area for the Complex is 20 Ha	5
About The 6th Phase	6

Investment Information

Investment Information About VR Krtsanisi Resort Residence	7
--	---

Infrastructure

Where Quality of Infrastructure Meets Exceptional Living	8
--	---

Our Services

Your Comfort is Our Priority	28
------------------------------------	----

Our Quality

Highest Quality Materials Used In VR Krtsanisi Resort Residence	30
Our Commitment to Quality	31
Green Frame Condition	32
Quality Like no Other Energy-Efficient Building Materials	33

Investment Information

Payment Terms	34
---------------------	----

<i>VR Krtsanisi Resort Residence Apartments</i>	38
---	----

ABOUT OUR PROJECTS



VR SHEKVETILI FOREST-BEACH

VR KRTSANISI RESORT RESIDENCE

VR VAKE SKY TOWER

VR HOLDING is a real estate development company, which was one of the first in the Georgian market to introduce the highest standard in the construction industry. The company was founded in 2010 by businessman Noshiko Namoradze and since then successfully implements innovative projects throughout Georgia.

Currently, the company has 3 large-scale ongoing projects:
VR SHEKVETILI FOREST-BEACH ,
VR KRTSANISI RESORT RESIDENCE , VR VAKE SKY TOWER

A professional mixed martial artist, Ilia Topuria, is shown in a ring, looking upwards with a determined expression. He is wearing a red and white striped scarf and has a tattoo on his chest. He is holding two gold UFC championship belts. The background is a blurred crowd in a stadium.

ILIA TOPURIA, OFFICIAL BRAND AMBASSADOR OF VR HOLDING

Excellence Without Limits

Ilia Topuria is a Georgian-Spanish professional mixed martial artist (MMA) and UFC World Champion, known for his discipline, determination, and high-level sporting achievements. Through his successful international career, he has become one of the most influential athletes and an inspiration to millions around the world.

As the Official Brand Ambassador of VR Holding, Ilia Topuria represents the values on which the company is built—perseverance, development, strength, and a continuous pursuit of perfection. This partnership brings together a world-class athlete and a modern development brand, with the goal of creating a new standard of living.

ILIA TOPURIA × VR HOLDING

VR KRTSANISI RESORT RESIDENCE

Breathe, Live, Relax

VR KRTSANISI RESORT RESIDENCE - THE PERFECT BLEND OF LUXURY,
MODERN DESIGN, AND EXCEPTIONAL INFRASTRUCTURE

ABOUT

VR Holding is developing the VR Krtsanisi Resort Residence, a modern district featuring premium class residential designs on Grigol Volski Street. As the first resort-type settlement in a diplomatic residence complex, it offers a fresh, eco-friendly environment and a relaxing atmosphere.

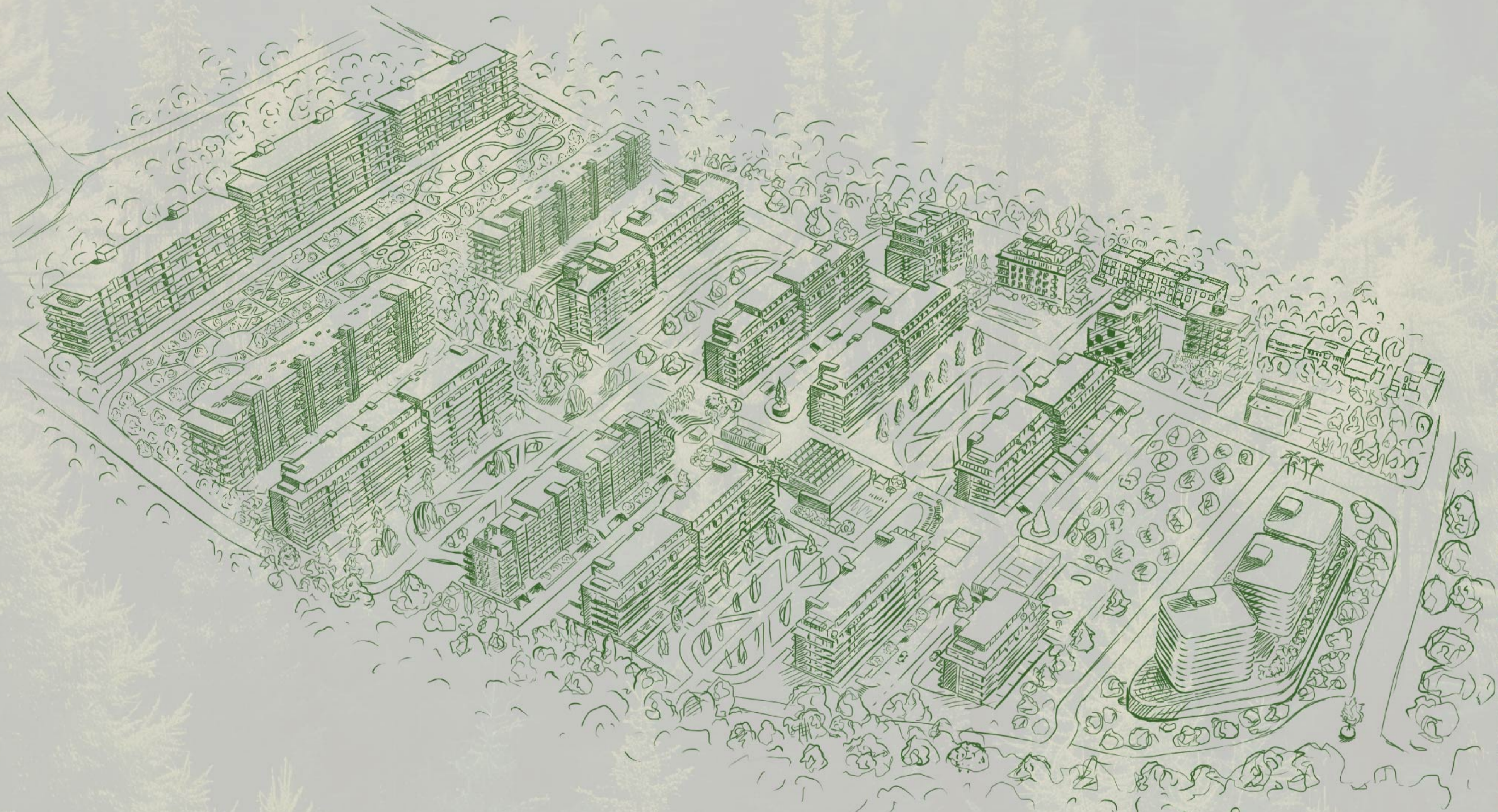
Spanning 20 hectares in the historic Krtsanisi area of Tbilisi, VR Krtsanisi Resort Residence is just 6 km from Freedom Square and 17 km from the airport, with breathtaking panoramic views of the city.

VR Krtsanisi Resort Residence, concept and design were developed by our highly qualified team, offering luxurious living with exceptional landscape design and diverse infrastructure. The project features 70% recreational space, including pools, fitness centers, sports courts, a horse stable, and mini golf. It also includes educational and commercial facilities, such as a hypermarket, cafes, shops, workspaces, and an indoor swimming pool. Our motto is “Breathe, Live, Relax”, based on which we offer comfort, safety, the highest quality and ecologically clean environment.

US

LOCATION

*The Project is Located in the Most Diplomatic,
Safe and Ecologically Clean Area of Tbilisi.*



FREEDOM SQUARE - 5.2 KM
OLD TBILISI - 4.1 KM
AIRPORT - 18.4 KM

DEVELOPMENT OF VR KRTSANISI RESORT RESIDENCE

The Total Project Area for the Complex is 20 Ha



THE PROJECT HAS 6 PHASES

The Distance Between the Blocks 50 m.

PHASE 6

Unique Concept That Creates a New Standard of Living

The Project establishes a completely new standard for integrating nature into urban space - It is a distinctive concept that is unprecedented in the Georgian market in terms of its scale and approach.

The Uniqueness of Phase 6 is defined by its “Living Architecture.” One of the project’s most distinctive solutions is the Biophilic Facade, where large integrated planters and evergreen plants create a constantly dynamic appearance - In any season of the year, the apartments maintain a sense of life and greenery.

The Central Part of The Project is Defined by a Distinctive Garden that brings together three different aesthetics: French elegance, Tropical lightness and Japanese serenity.

INVESTMENT INFORMATION

14%
Annual Return (ROI)

Apartments From
50.1 sq.m

15
Years Of Experience

7ha
Recreational Space

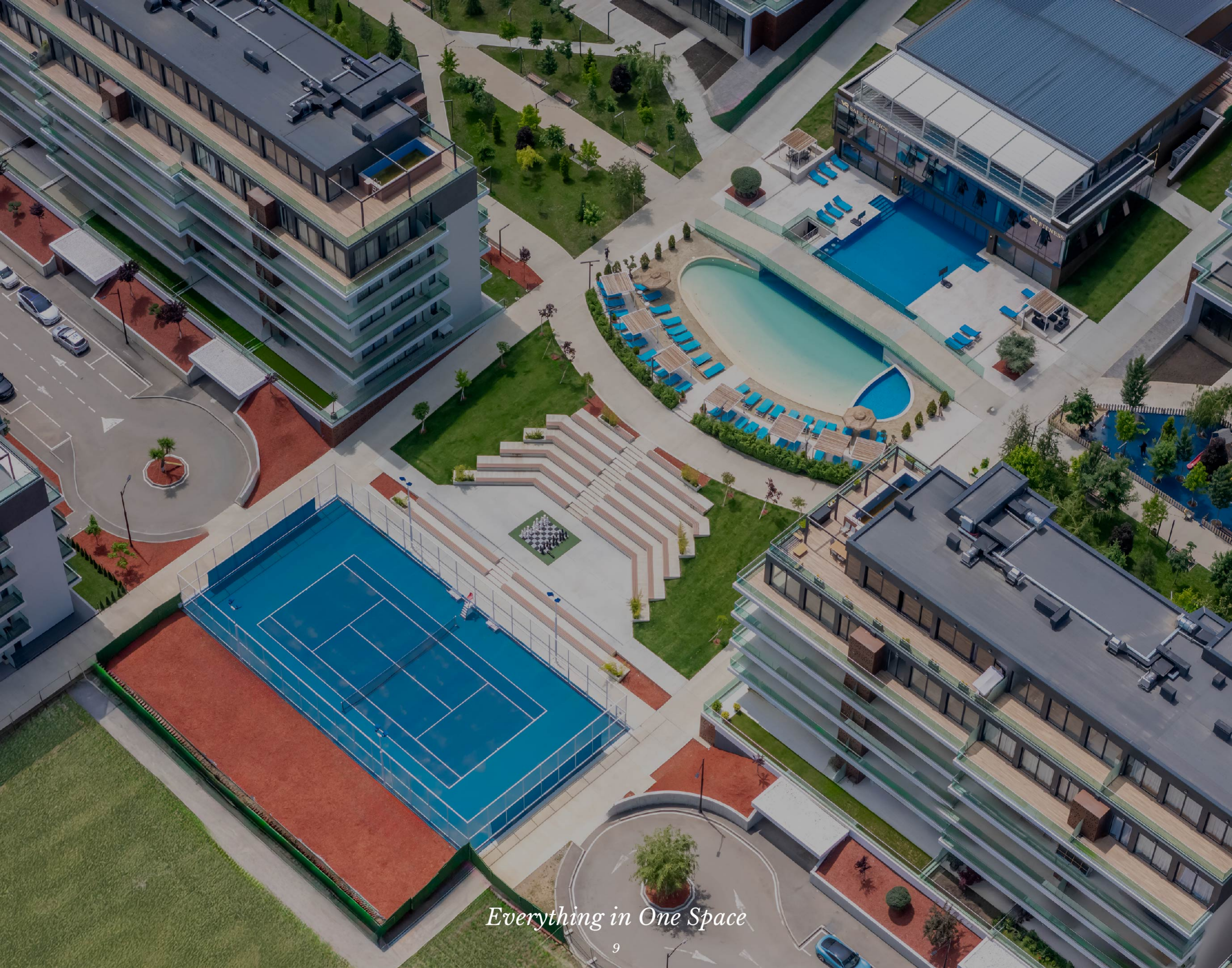


INFRASTRUCTURE

Where Quality of Infrastructure Meets Exceptional Living

VR Krtsanisi Resort Residence offers more than just a place to live – it's a lifestyle. Our residents enjoy an exclusive range of premium amenities and activities, all thoughtfully integrated into the resort. Designed to meet the needs of every age and interest, it's a place where comfort, convenience, and enjoyment come together seamlessly.

- Kids Playgrounds
- Football
- Basketball
- Tennis
- Padel Tennis
- Mini Golf
- Bowling Club
- Entertainment Area
- Gym
- Spa & Wellness Center
- Amphitheatre
- School
- Kindergarten
- Hippodrome
- Swimming Pool with a Sandy Beach
- 80-Meter Infinity Pool
- Pool On The Terrace
- Multifunctional Centre
- Bicycle and Pedestrian Paths
- 70% Recreational Area
- Fine-Dining Restaurants
- Wine Tasting Area and Cellar
- Conference Hall
- French Garden
- Tropical Garden
- Japanese Garden



Everything in One Space



Multifunctional Building



Mini Golf Court



Amphitheatre



Padel Tennis



Sports Fields



Hippodrome



Kids Playgrounds



Recreational Areas in Every Phase of the Complex



French Garden



Tropical Garden



Japanese Garden



45-Meter Pool with a Sandy Beach and Imitation of Sea Waves



Indoor Swimming Pool



80-Meter Infinity Pool and Terrace Pool With Panoramic City Views



Restaurant "Marani"



Spa & Wellness Centre



Sauna



Gym (Fully Equipped with Technogym Fitness Equipment)

OUR SERVICES

Your Comfort is Our Priority



Cleaning Service



Rent



24-Hour Security



Gardening Service



Parking



Concierge



Technical Support



Taking Care of Shared Spaces,
Halls, and Elevators



Room Service



Manager of the Complex



Monitoring of
Water Reservoirs



Fire System Services



Laundry Service



Transportation



Valet Parking



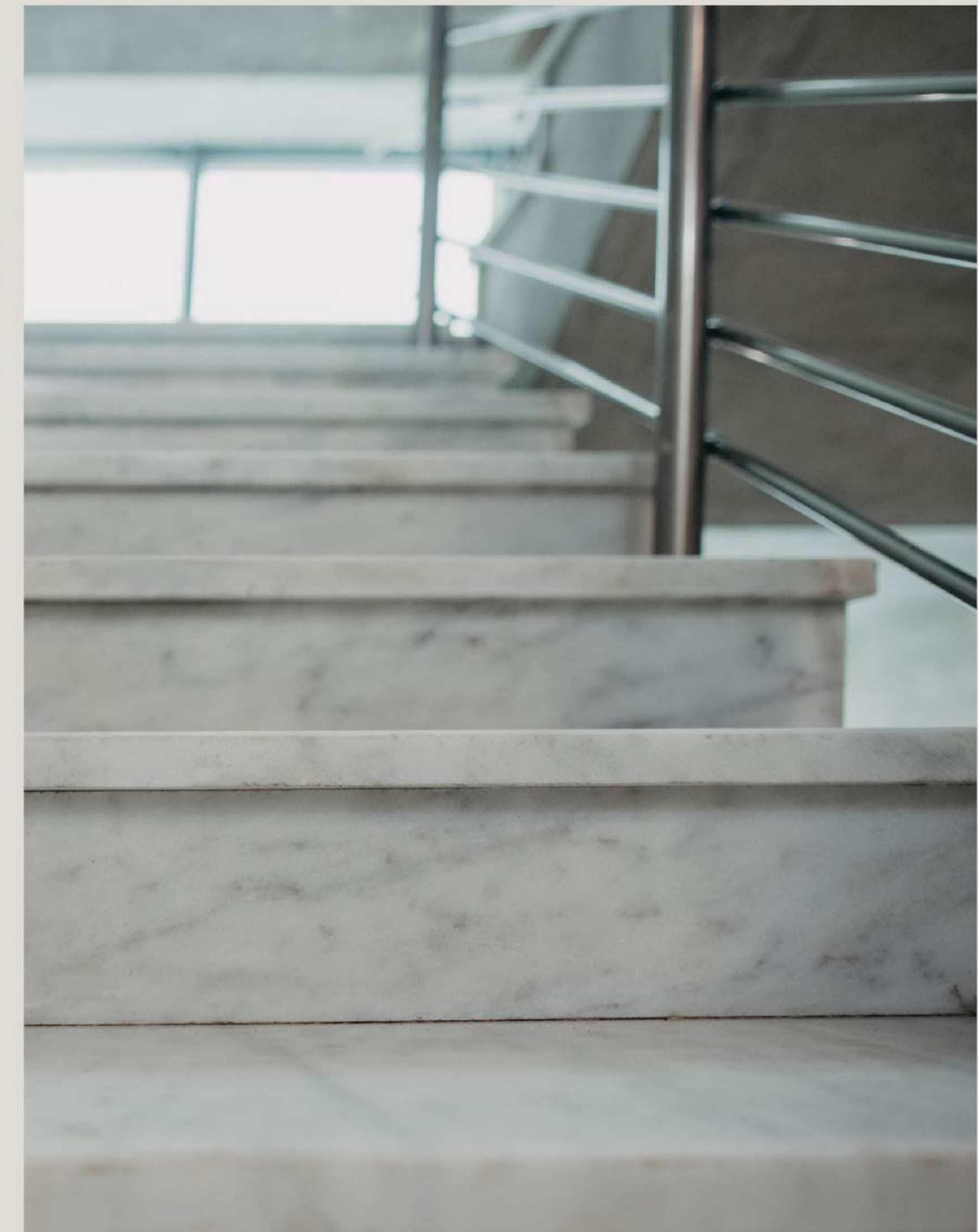
Grocery Services at the Door

OUR QUALITY

Built to endure with the highest quality materials, every detail reflects our commitment to lasting excellence.

HIGHEST QUALITY MATERIALS

Used in VR Krtsanisi Resort Residence



We've meticulously chosen the finest materials for our buildings. Premium Fundermax and Grespania materials grace our facades, ensuring durability and timeless elegance. Italian Marble Flooring in entrance halls and high-quality laminated pile on walls create an opulent welcome. Inside, marble stairs and Stainless Steel Hand Rails add grandeur. Every detail reflects our commitment to quality and luxury.

OUR COMMITMENT TO QUALITY

Attention to Every Detail



In shaping VR Krtsanisi Resort Residence, we've chosen top-tier materials like aluminum doors and windows, exclusive Ukrainian iron doors, and Italian locks for a perfect blend of precision, security, and elegance. Elevate your living experience with KONE and OTIS elevators, ensuring seamless vertical mobility in our exceptional spaces.

GREEN FRAME CONDITION

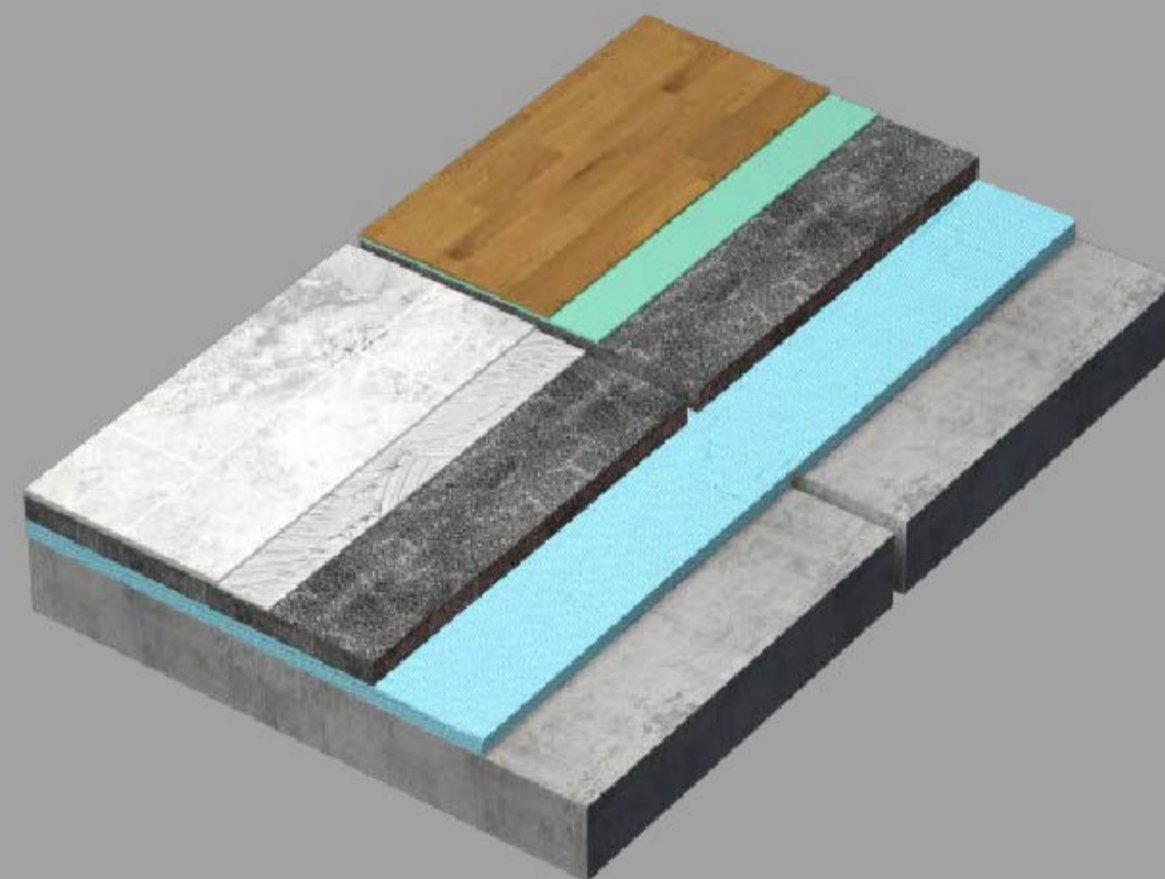
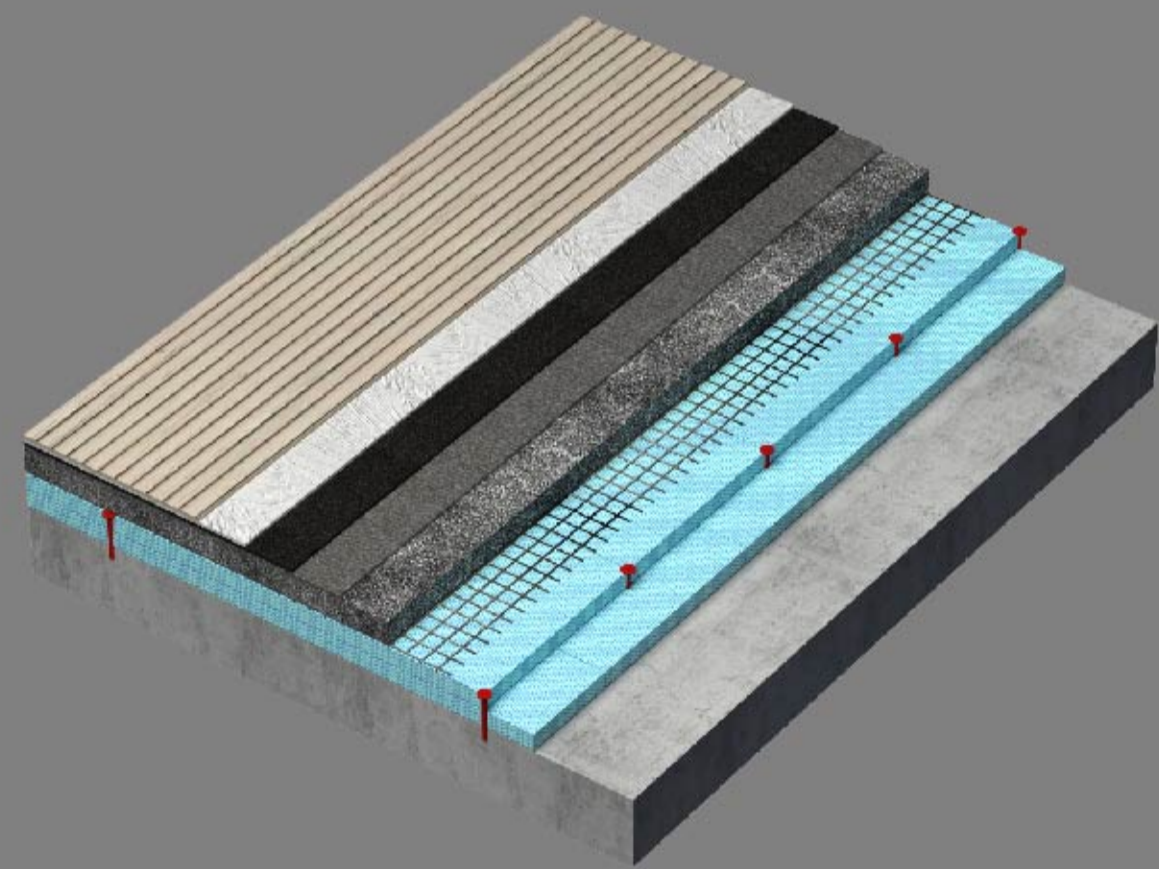
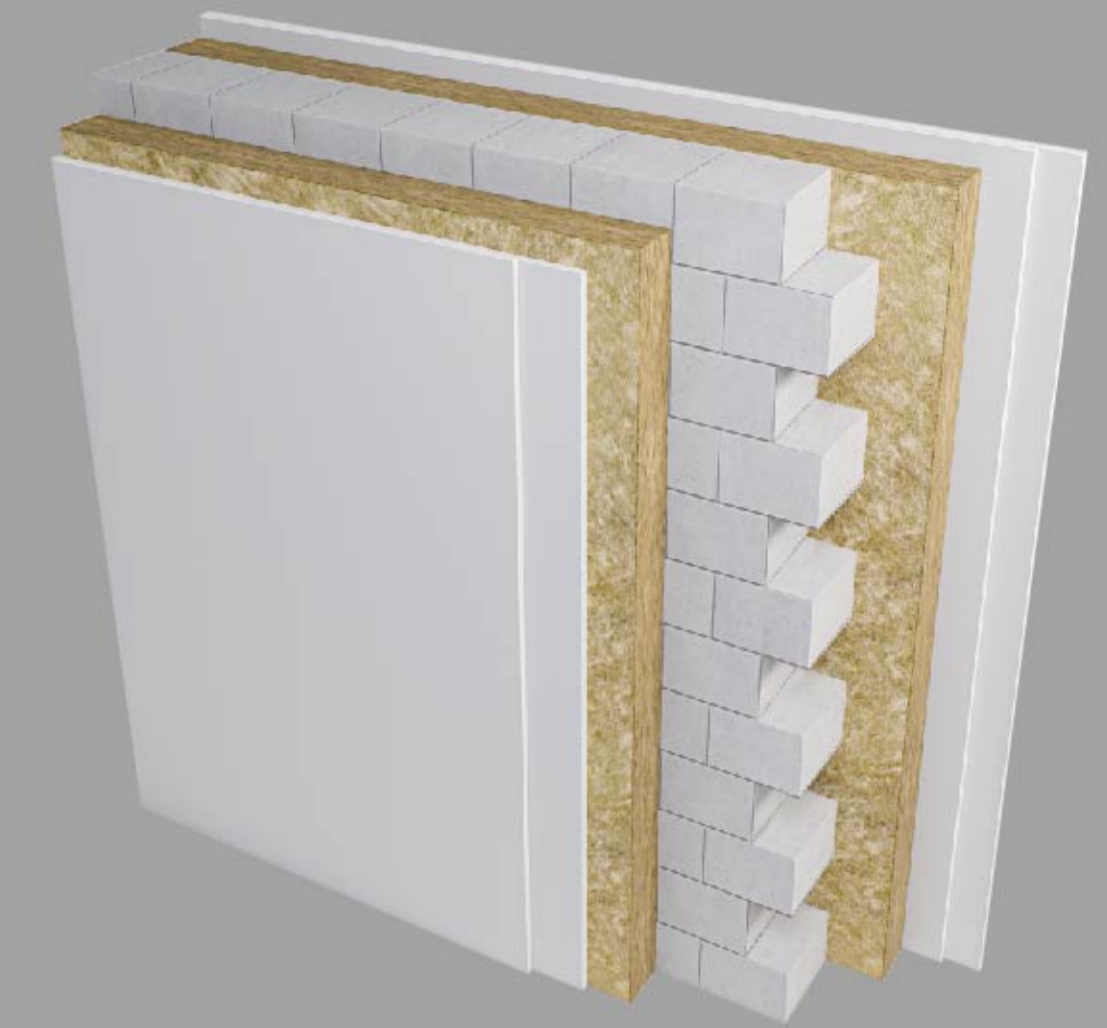


All Apartments Will be Handed Over in Green Frame Condition

- Finished Room Dividers
- Plumbing Pipe-Wiring Consumption to the Point
- Heating Piping (Sectional or Panel for Radiators)
- Electric Points
- Internet
- Television
- Intercom
- Stretched Floor
- Entrance Iron Door
- Aluminum Doors and Windows
- Balcony Covered with Frost-Resistant Granite

QUALITY LIKE NO OTHER

Energy-Efficient Building Materials



- Monolithic Concrete Wall
- Composite Tile
- Aluminum Bracket

- Stone Wool Insulation
- Exterior Wall Detail
- Stone Wool Thermal

- Insulation - 50 mm
- Detail of Partition Wall
- Ceramic Granite Tile - 10 mm
- Detail of the Roof of the Building
- Glue Cement - 5 mm
- Double Waterproofing
- Stretched Floor - 60 mm
- Reinforcement Mesh
- Double Thermal Insulation (XPS) - 100 mm
- Laminated Parquet - 10 mm
- The Lower Layer of Laminate - 3 mm
- Thermal Insulation - 50 mm
- Monolithic Layer of Concrete - 220 mm

PAYMENT TERMS

10 YEAR

VR Krtsanisi Resort Residence offers you a unique opportunity to purchase premium class apartments with a 10-year internal installment plan without the need for income verification or salary confirmation

INSTALLMENT PLAN

14%

ROI

Apartments From

50.1

sq.m.

Delivery Condition: Green Frame

PAYMENT TERMS

We strive to make our projects as affordable as possible for our customers, despite their high quality. That is why we offer payment terms tailored to you. For additional convenience, residents can pay both monthly and quarterly.

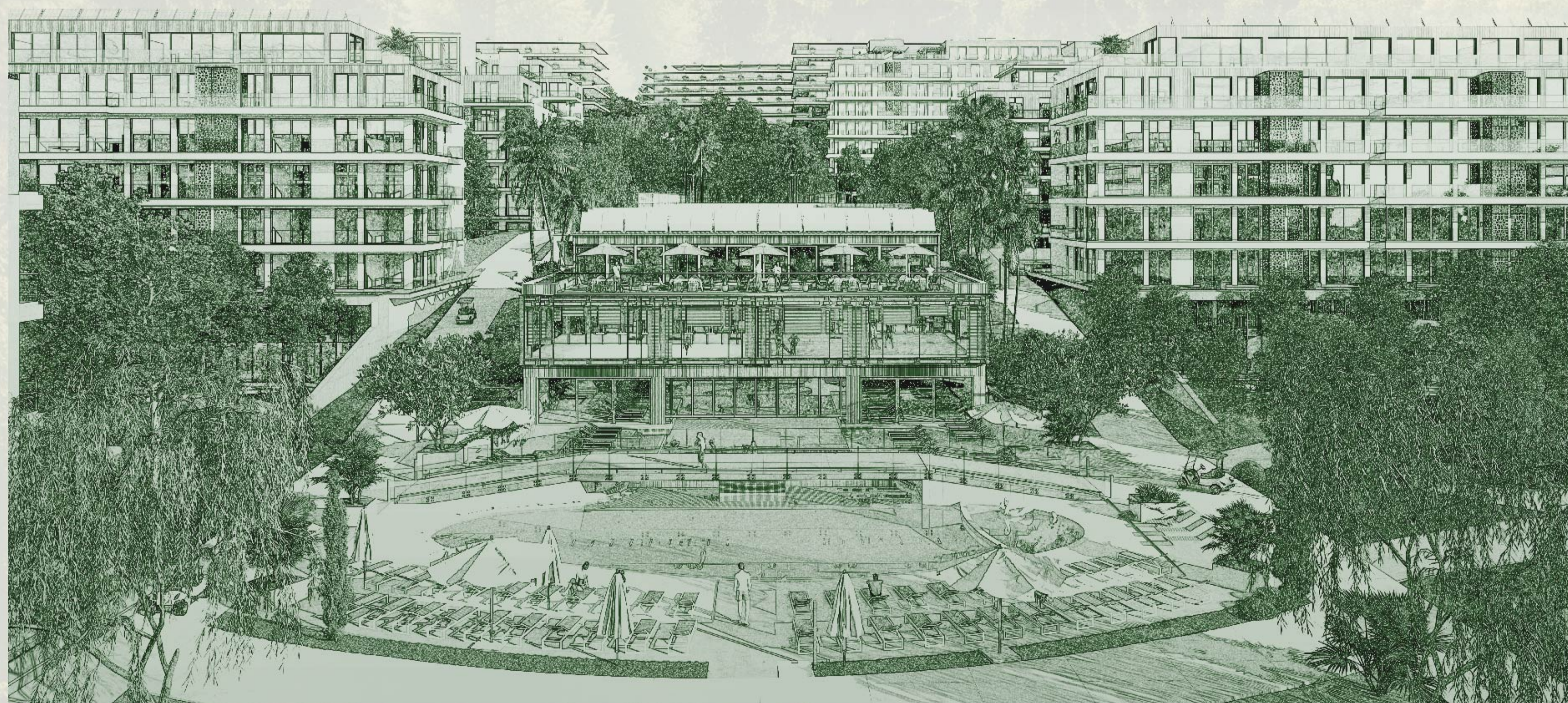
Down-Payment

20%

80%

Distributed Before
the Completion of
Construction

FLOOR PLANS



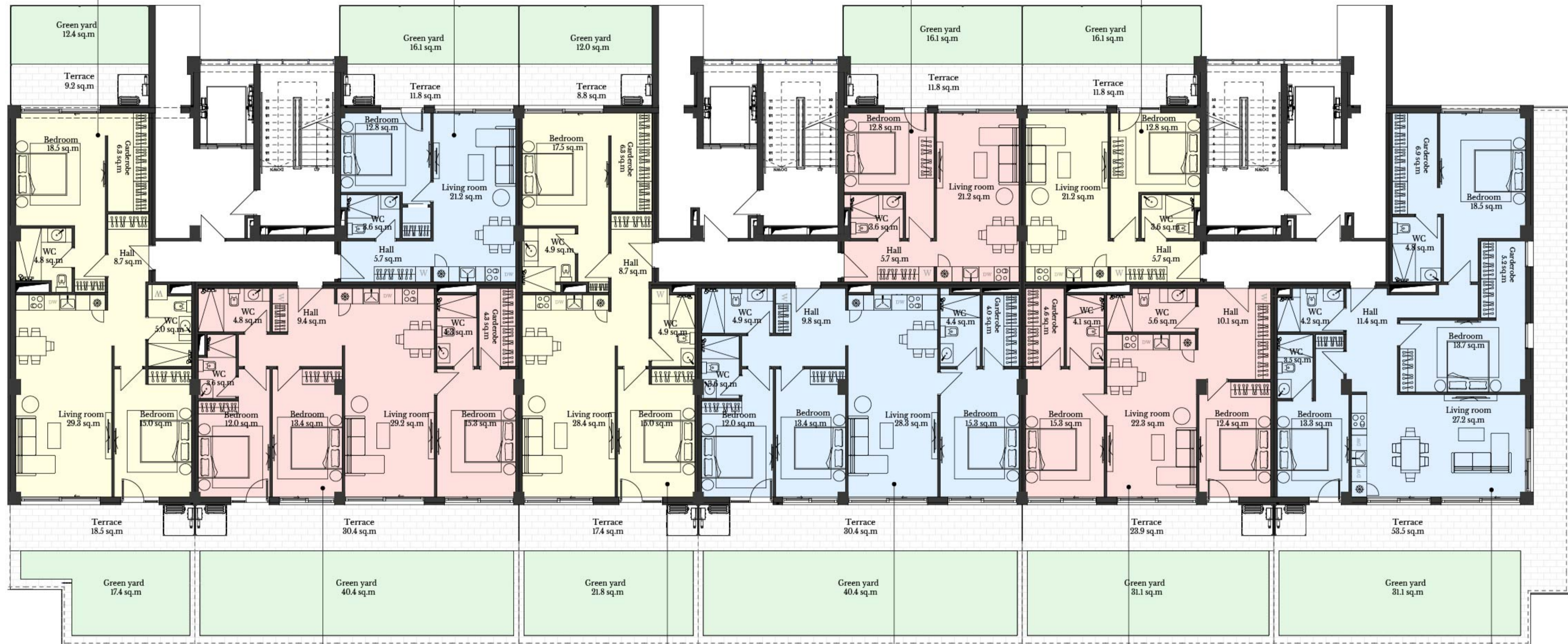
26 - 30 FLOOR PLANS

Apartment N 50	
Residential	90.3 sq.m
Terrace	57.5 sq.m
Total	147.8 sq.m

Apartment N 48	
Residential	44.6 sq.m
Terrace	27.9 sq.m
Total	72.5 sq.m

Apartment N 24	
Residential	44.6 sq.m
Terrace	27.9 sq.m
Total	72.5 sq.m

Apartment N 3	
Residential	44.6 sq.m
Terrace	27.9 sq.m
Total	72.5 sq.m



Apartment N 49	
Residential	99.8 sq.m
Terrace	70.8 sq.m
Total	170.6 sq.m

Apartment N 26	
Residential	88.8 sq.m
Terrace	60.0 sq.m
Total	148.8 sq.m

Apartment N 25	
Residential	99.7 sq.m
Terrace	70.8 sq.m
Total	170.5 sq.m

Apartment N 2	
Residential	77.0 sq.m
Terrace	50.0 sq.m
Total	132.0 sq.m

Apartment N 1	
Residential	112.7 sq.m
Terrace	84.6 sq.m
Total	197.3 sq.m

I Floor / Blocks: 26 - 27 - 28



I Floor / Blocks: 29 - 30

Apartment N 59A	
Residential	44.6 sq.m
Terrace	12.1 sq.m
Total	56.7 sq.m

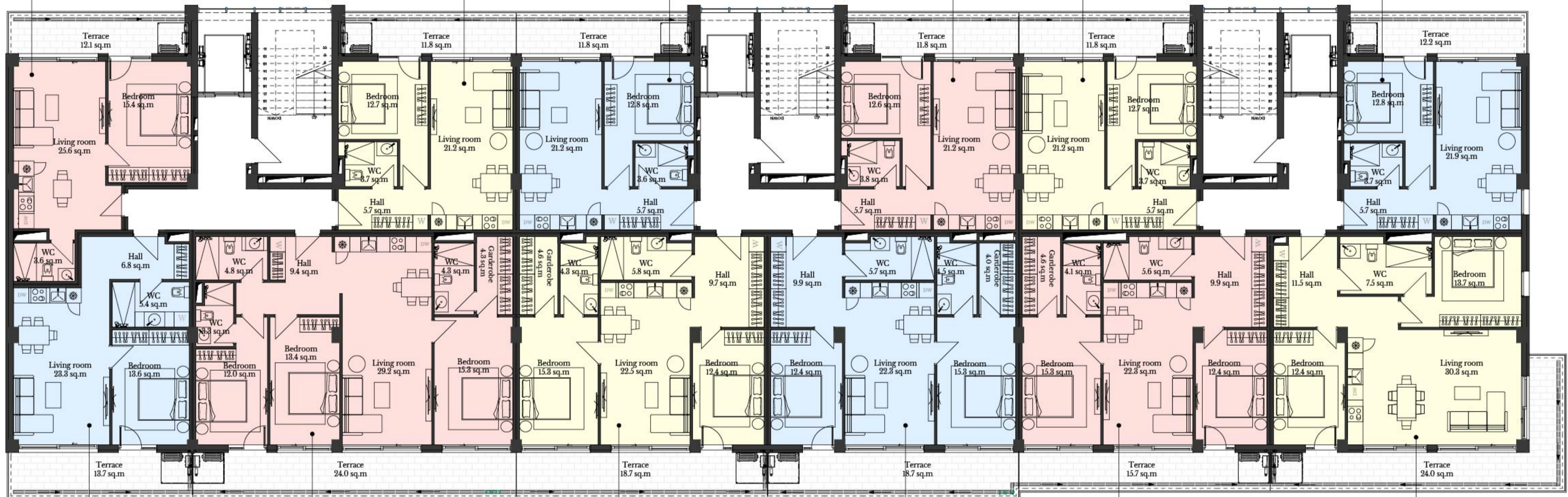
Apartment N 57	
Residential	44.6 sq.m
Terrace	11.8 sq.m
Total	56.4 sq.m

Apartment N 38	
Residential	44.6 sq.m
Terrace	11.8 sq.m
Total	56.4 sq.m

Apartment N 35	
Residential	44.6 sq.m
Terrace	11.8 sq.m
Total	56.4 sq.m

Apartment N 15	
Residential	44.6 sq.m
Terrace	11.8 sq.m
Total	56.4 sq.m

Apartment N 12	
Residential	45.4 sq.m
Terrace	12.1 sq.m
Total	57.5 sq.m



Apartment N 59	
Residential	50.2 sq.m
Terrace	13.7 sq.m
Total	63.9 sq.m

Apartment N 58	
Residential	99.8 sq.m
Terrace	24.0 sq.m
Total	123.8 sq.m

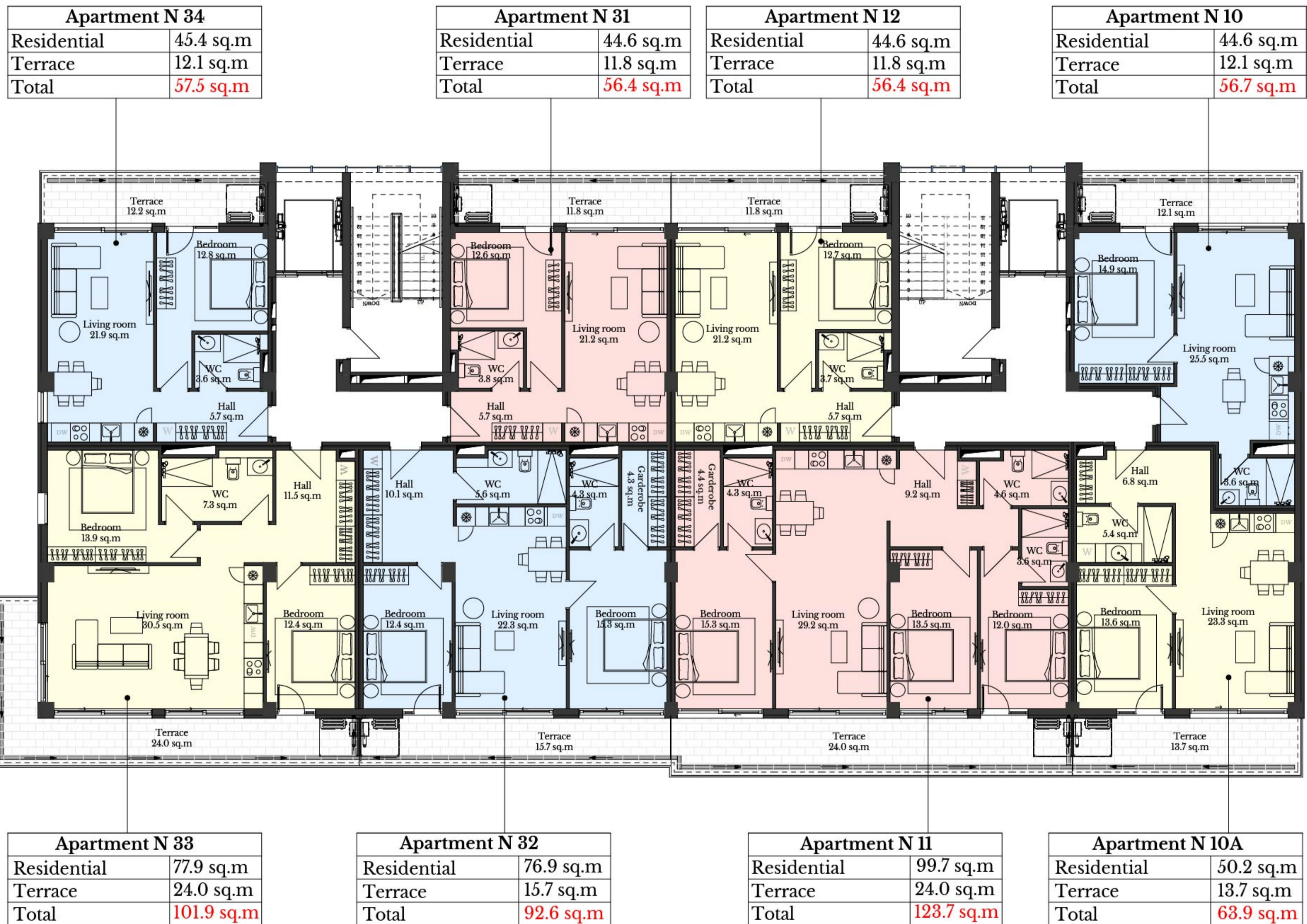
Apartment N 37	
Residential	77.1 sq.m
Terrace	18.7 sq.m
Total	95.8 sq.m

Apartment N 36	
Residential	76.7 sq.m
Terrace	18.7 sq.m
Total	95.4 sq.m

Apartment N 14	
Residential	77.0 sq.m
Terrace	15.7 sq.m
Total	92.7 sq.m

Apartment N 13	
Residential	77.8 sq.m
Terrace	24.0 sq.m
Total	101.8 sq.m

Typical Floors II-VI / Blocks: 26 - 27 - 28



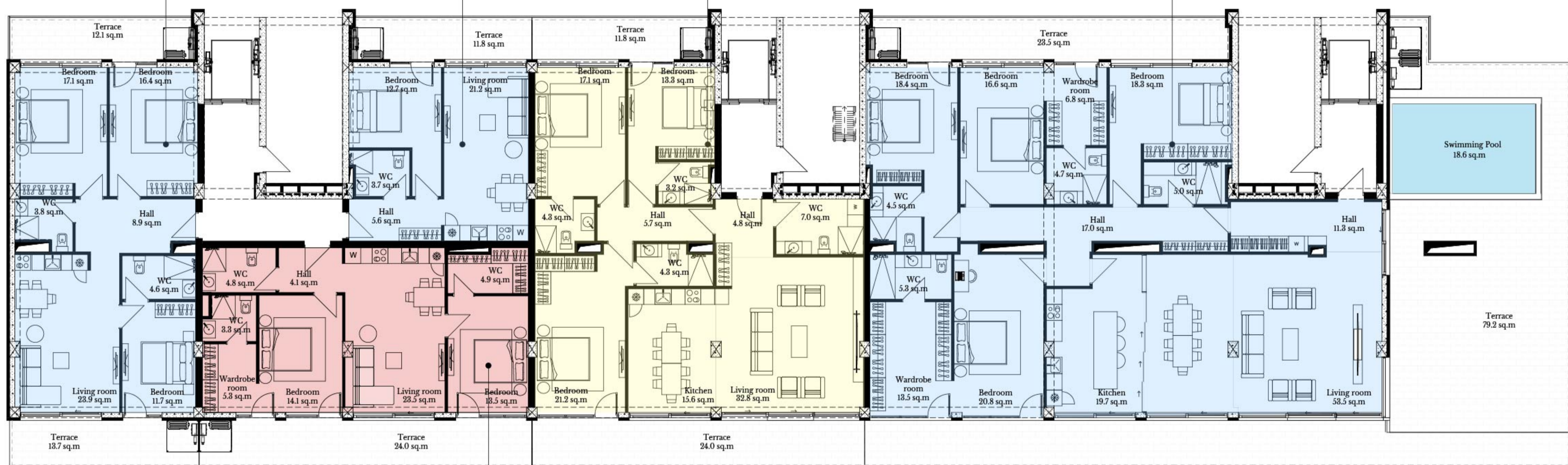
Typical Floors II-VI / Blocks: 29 - 30

Apartment N 68	
Residential	88.6 sq.m
Terrace	25.8 sq.m
Total	114.4 sq.m

Apartment N 66	
Residential	44.6 sq.m
Terrace	11.8 sq.m
Total	56.4 sq.m

Apartment N 47	
Residential	133.5 sq.m
Terrace	35.8 sq.m
Total	169.3 sq.m

Apartment N 20	
Residential	222.1 sq.m
Terrace	102.7 sq.m
Pool	18.6 sq.m
Total	343.4 sq.m

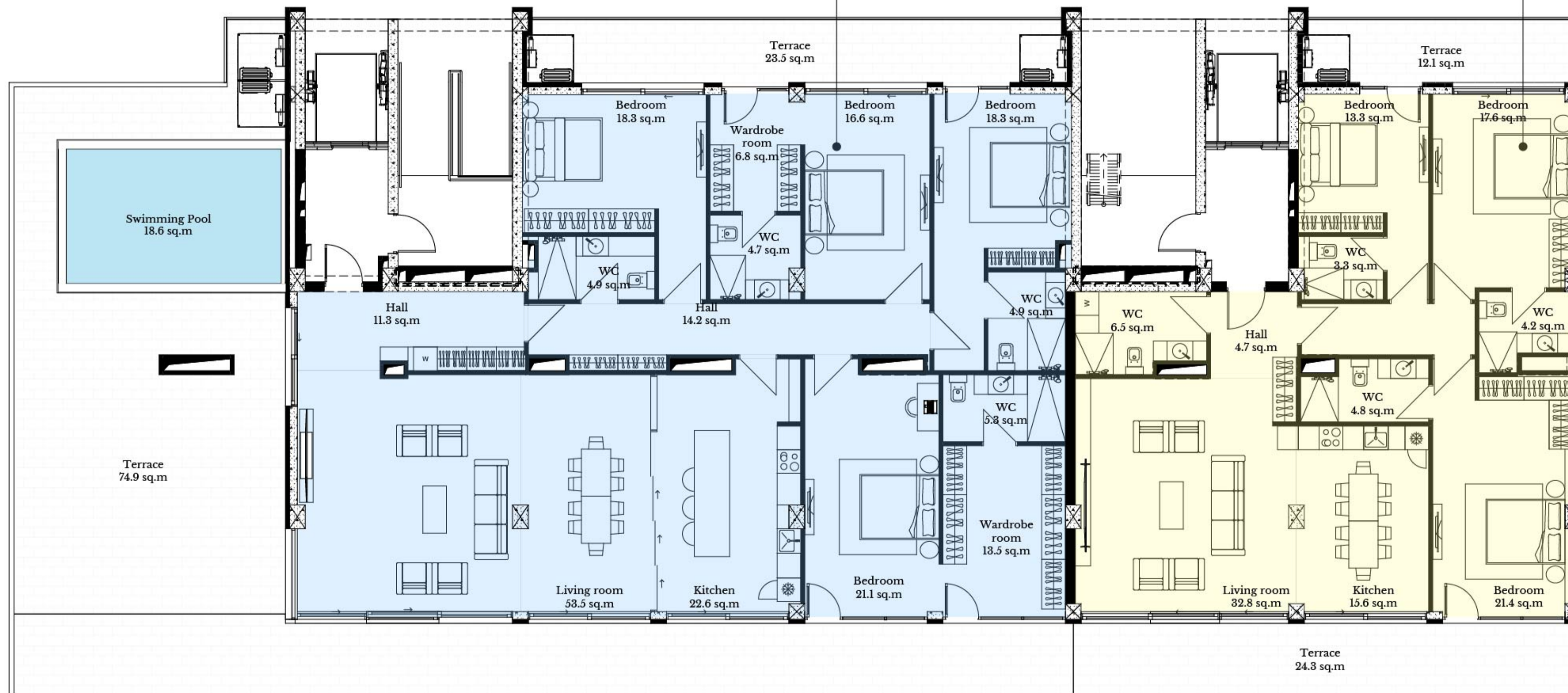


Apartment N 67	
Residential	76.3 sq.m
Terrace	24.0 sq.m
Total	100.3 sq.m

VII Floor / Blocks: 26 - 27 - 28

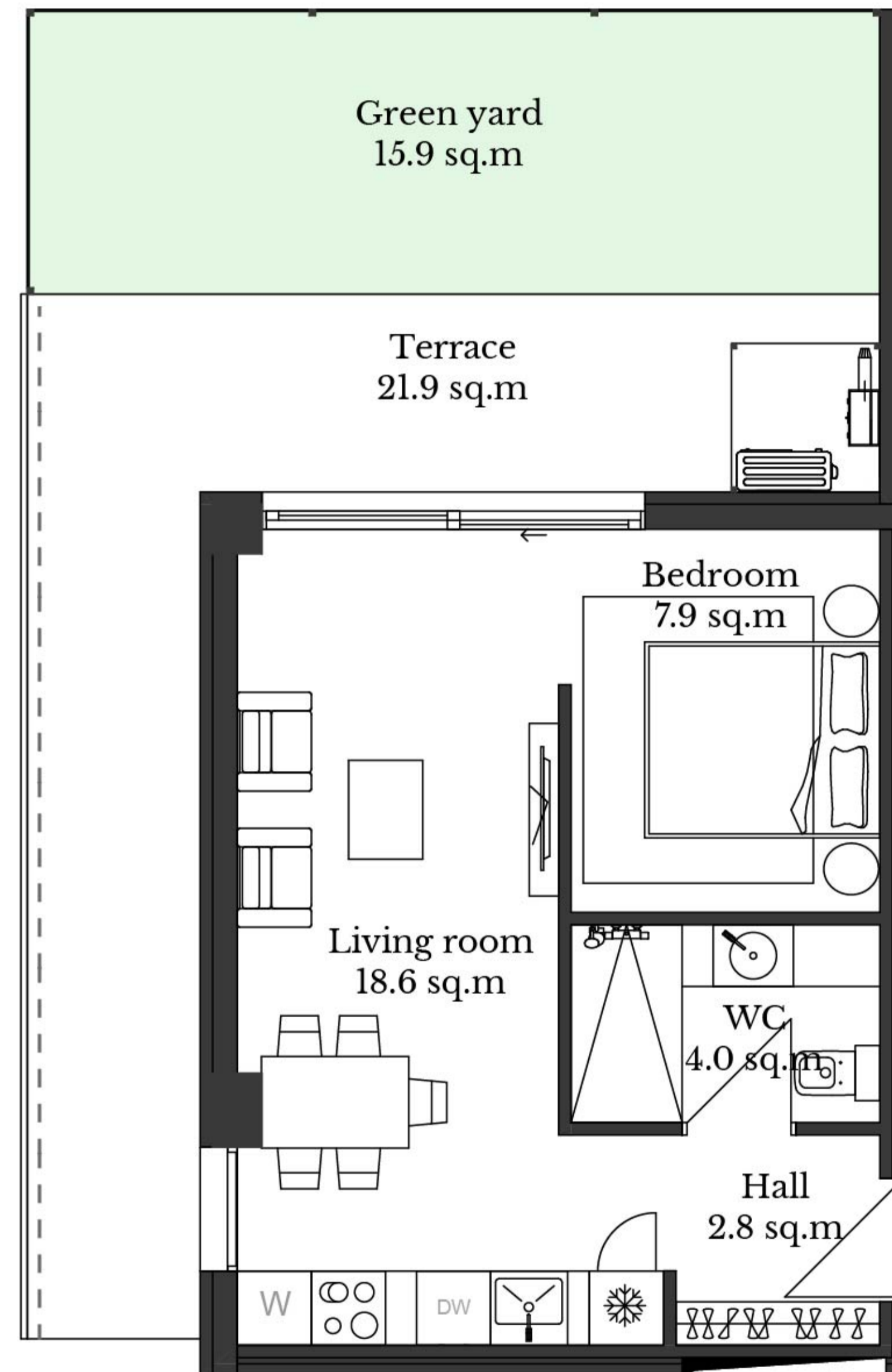
Apartment N 20	
Residential	222.8 sq.m
Terrace	98.4 sq.m
Pool	18.6 sq.m
Total	339.8 sq.m

Apartment N 19	
Residential	134.0 sq.m
Terrace	36.4 sq.m
Total	170.4 sq.m



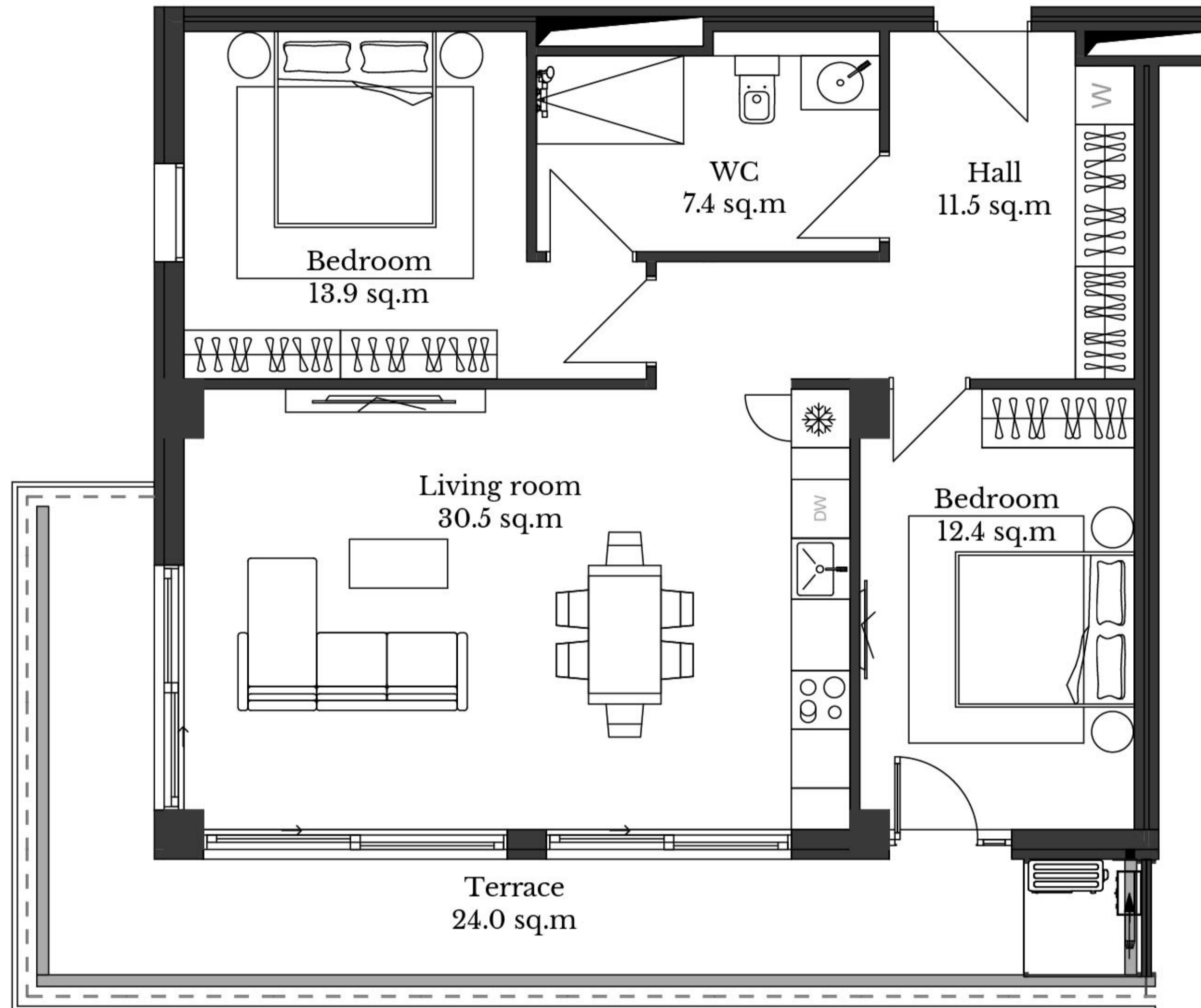
VII Floor / Blocks: 29 - 30

ONE-BEDROOM



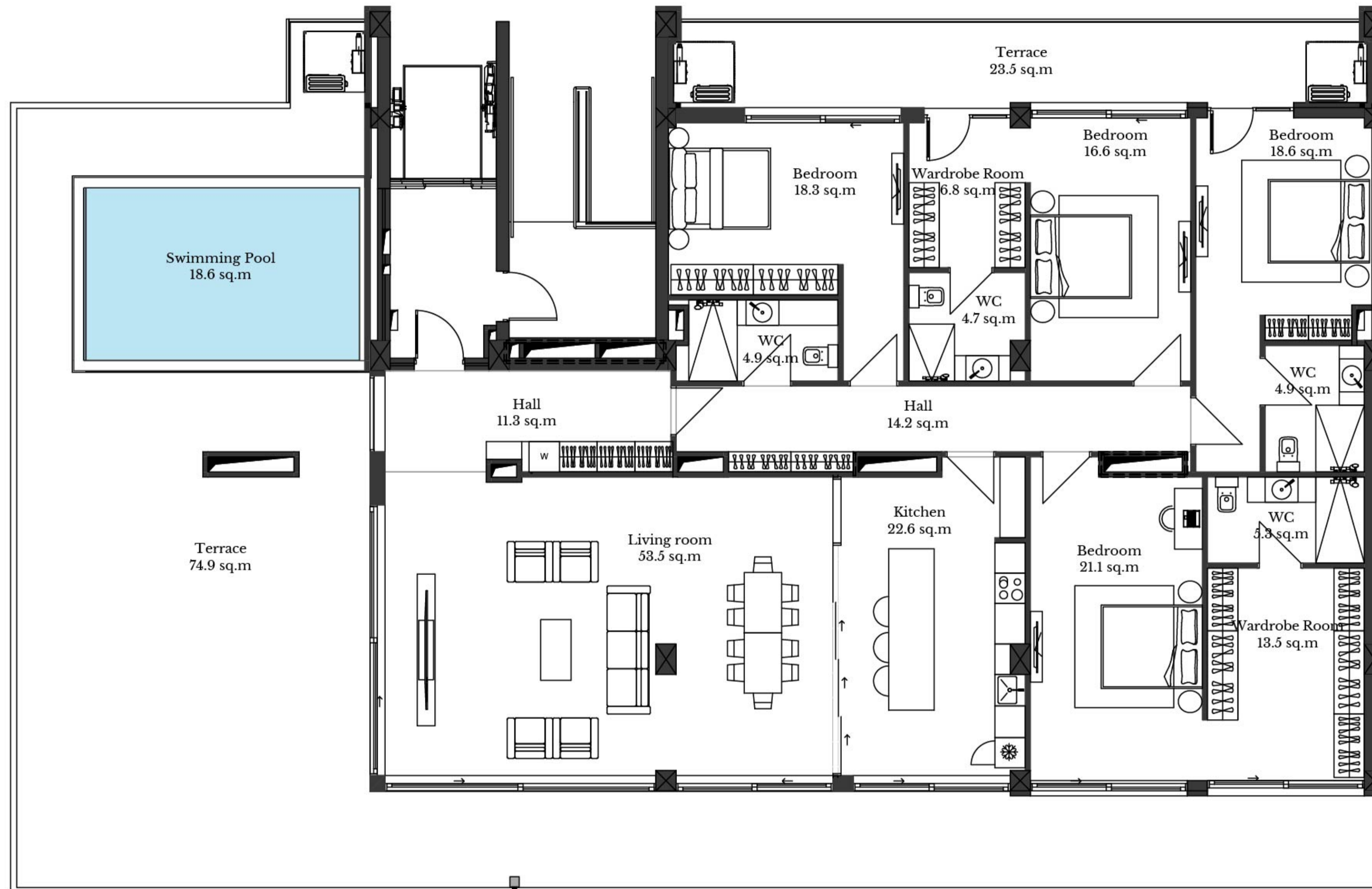
Apartment N 22A	
Residential	34.2 sq.m
Terrace	37.8 sq.m
Total	72.0 sq.m

TWO-BEDROOM



Apartment N 37	
Residential	77.9 sq.m
Terrace	24.0 sq.m
Total	101.8 sq.m

PENTHOUSE



Apartment N 20	
Residential	222.8 sq.m
Terrace	98.4 sq.m
Swimming Pool	18.6 sq.m
Total	339.8 sq.m

31 - 35 FLOOR PLANS

Apartment N 27 A	
Residential	25.5 sq.m
Terrace	18.2 sq.m
Total	43.7 sq.m

Apartment N 24	
Residential	55.6 sq.m
Terrace	35.3 sq.m
Total	90.9 sq.m

Apartment N 4	
Residential	42.1 sq.m
Terrace	25.2 sq.m
Total	67.3 sq.m

Apartment N 2	
Residential	40.4 sq.m
Terrace	30.0 sq.m
Total	70.4 sq.m



Apartment N 27	
Residential	43.8 sq.m
Terrace	34 sq.m
Total	77.8 sq.m

Apartment N 26	
Residential	43.9 sq.m
Terrace	34.0 sq.m
Total	77.9 sq.m

Apartment N 25	
Residential	65.3 sq.m
Terrace	49.7 sq.m
Total	115.0 sq.m

Apartment N 3	
Residential	70.1 sq.m
Terrace	53.0 sq.m
Total	123.1 sq.m

Apartment N 2 A	
Residential	64.4 sq.m
Terrace	64.7 sq.m
Total	129.1 sq.m

I Floor / Blocks: 31 - 32



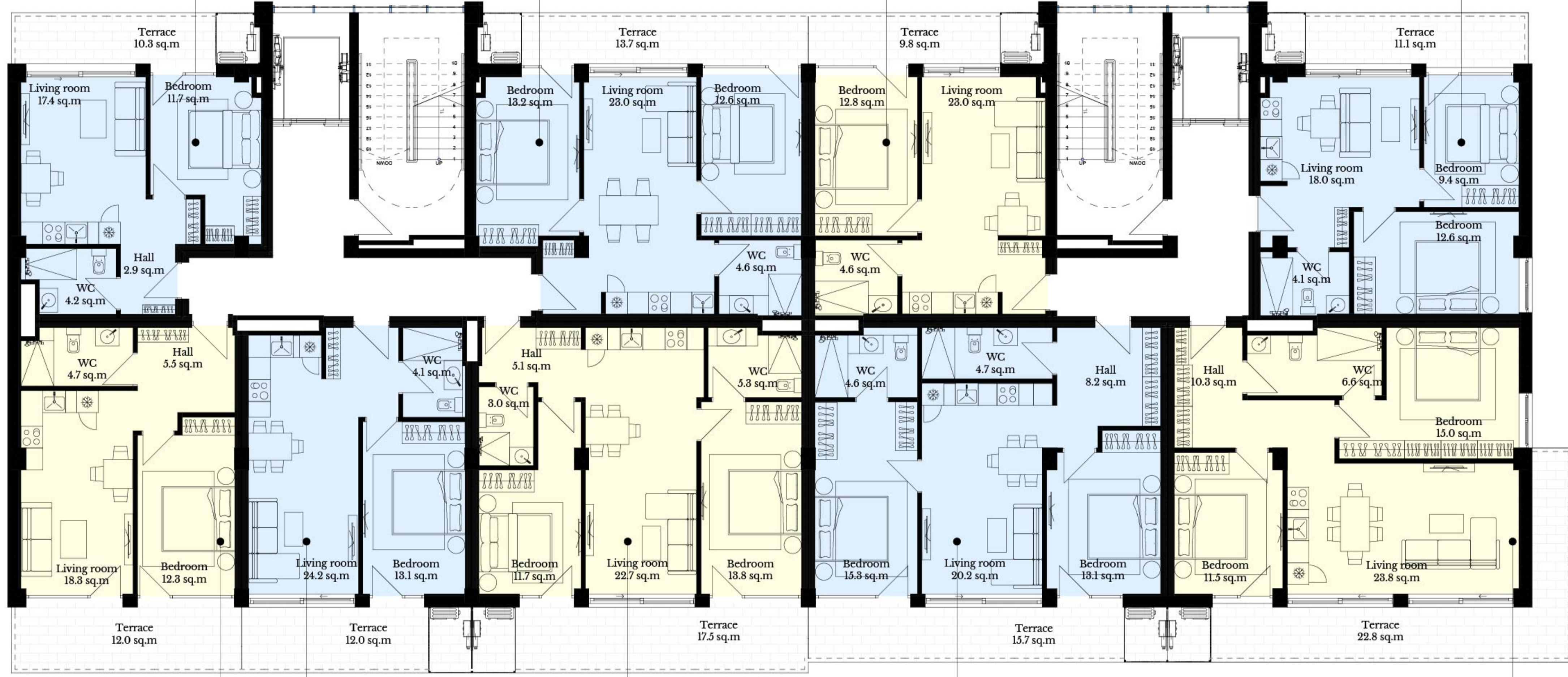
I Floor / Blocks: 33 - 34 - 35

Apartment N 31 A	
Residential	38.6 sq.m
Terrace	10.3 sq.m
Total	48.9 sq.m

Apartment N 28	
Residential	55.6 sq.m
Terrace	13.7 sq.m
Total	69.3 sq.m

Apartment N 8	
Residential	42.1 sq.m
Terrace	9.8 sq.m
Total	51.9 sq.m

Apartment N 5	
Residential	46.7 sq.m
Terrace	11.1 sq.m
Total	57.8 sq.m



Apartment N 31	
Residential	43.7 sq.m
Terrace	12.0 sq.m
Total	55.7 sq.m

Apartment N 30	
Residential	43.9 sq.m
Terrace	12.0 sq.m
Total	55.9 sq.m

Apartment N 29	
Residential	65.3 sq.m
Terrace	17.5 sq.m
Total	82.8 sq.m

Apartment N 7	
Residential	70.2 sq.m
Terrace	15.7 sq.m
Total	85.9 sq.m

Apartment N 6	
Residential	69.6 sq.m
Terrace	22.8 sq.m
Total	92.4 sq.m

Typical Floors II-VI / Blocks: 31 - 32

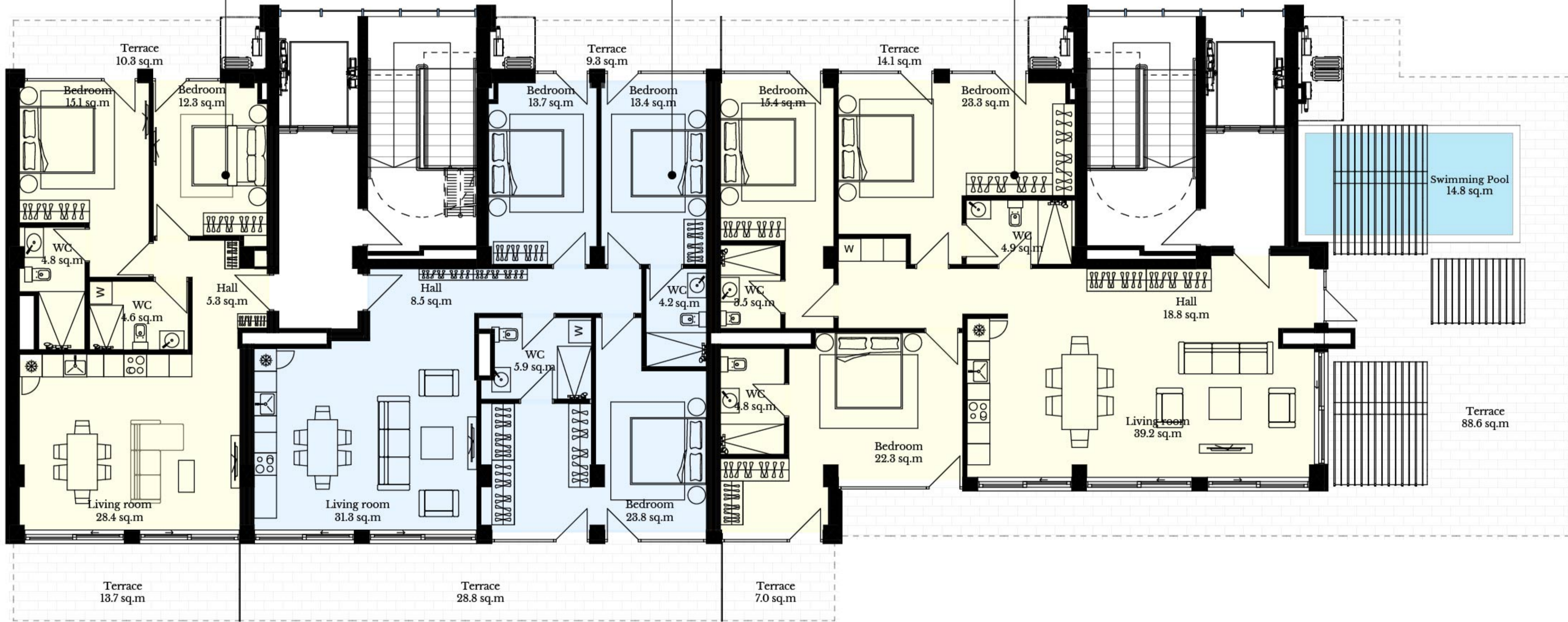


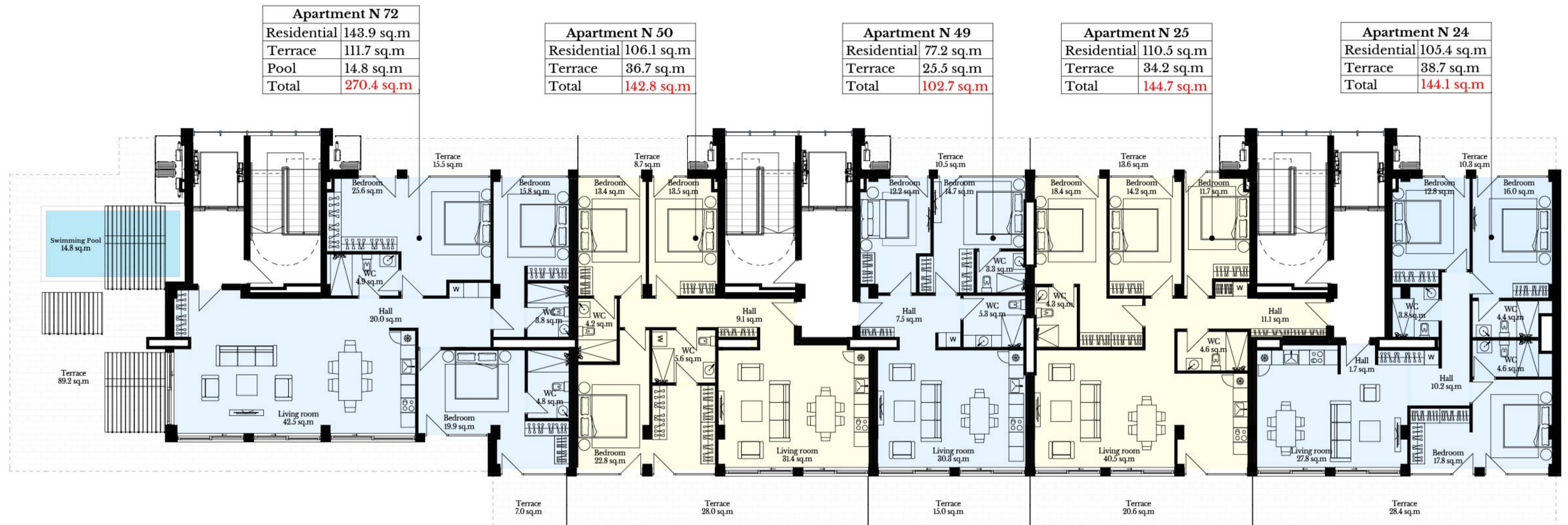
Typical Floors II-VI / Blocks: 33 - 34 - 35

Apartment N 47	
Residential	74.4 sq.m
Terrace	24 sq.m
Total	98.4 sq.m

Apartment N 46	
Residential	106.4 sq.m
Terrace	38.1 sq.m
Total	144.5 sq.m

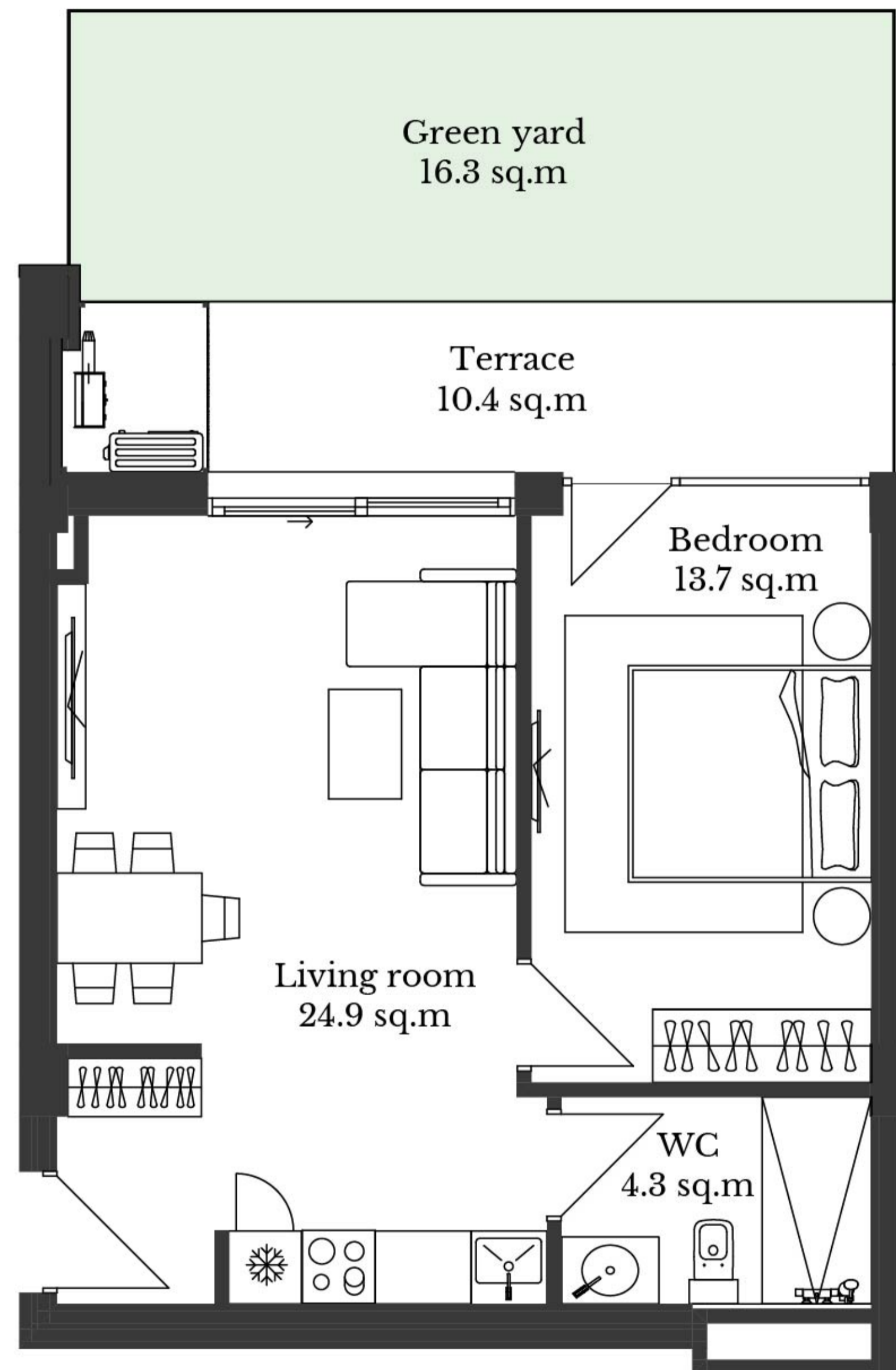
Apartment N 22	
Residential	138.7 sq.m
Terrace	109.7 sq.m
Pool	14.8 sq.m
Total	263.2 sq.m





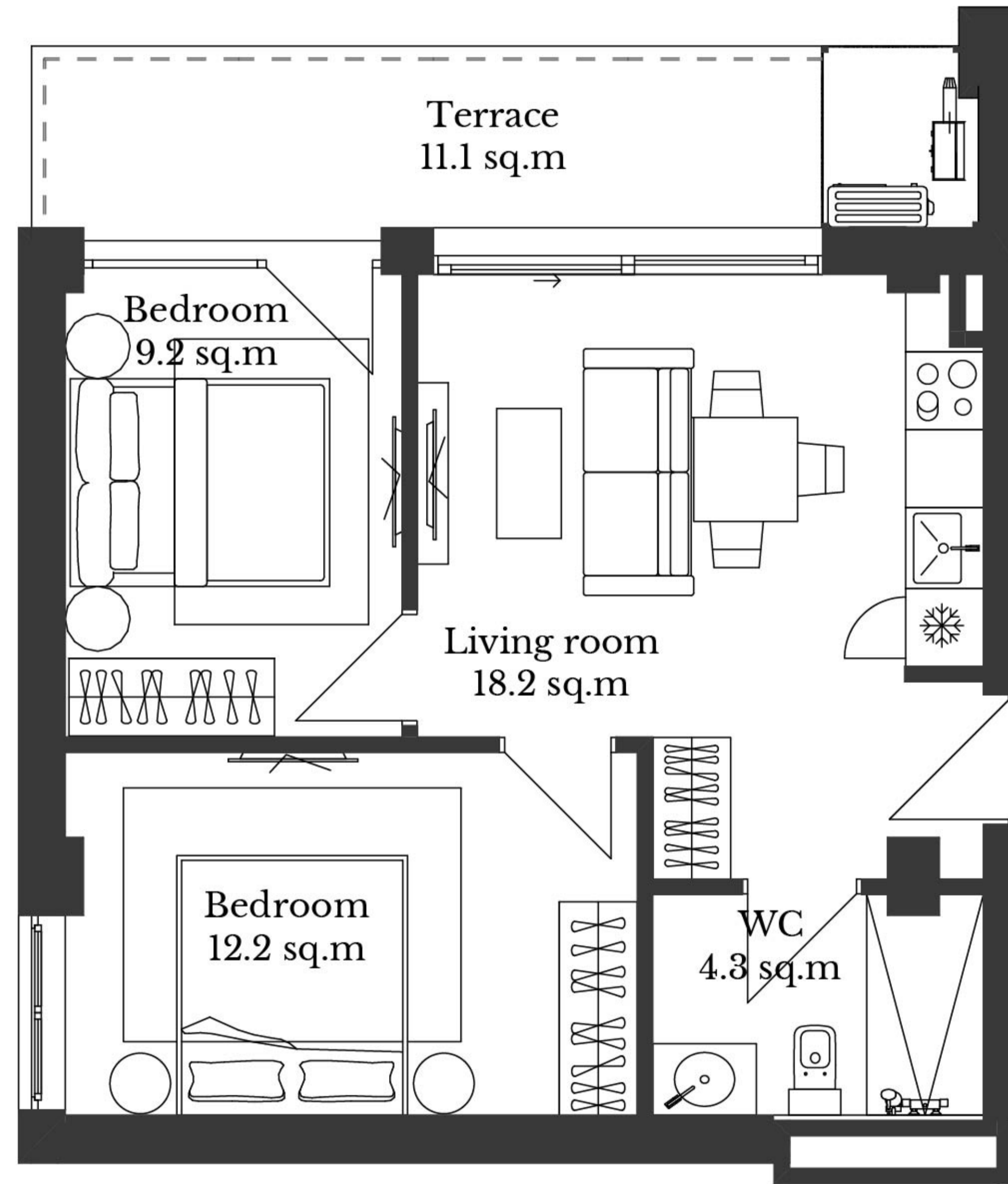
VII Floor / Blocks: 33 - 34 - 35

ONE-BEDROOM



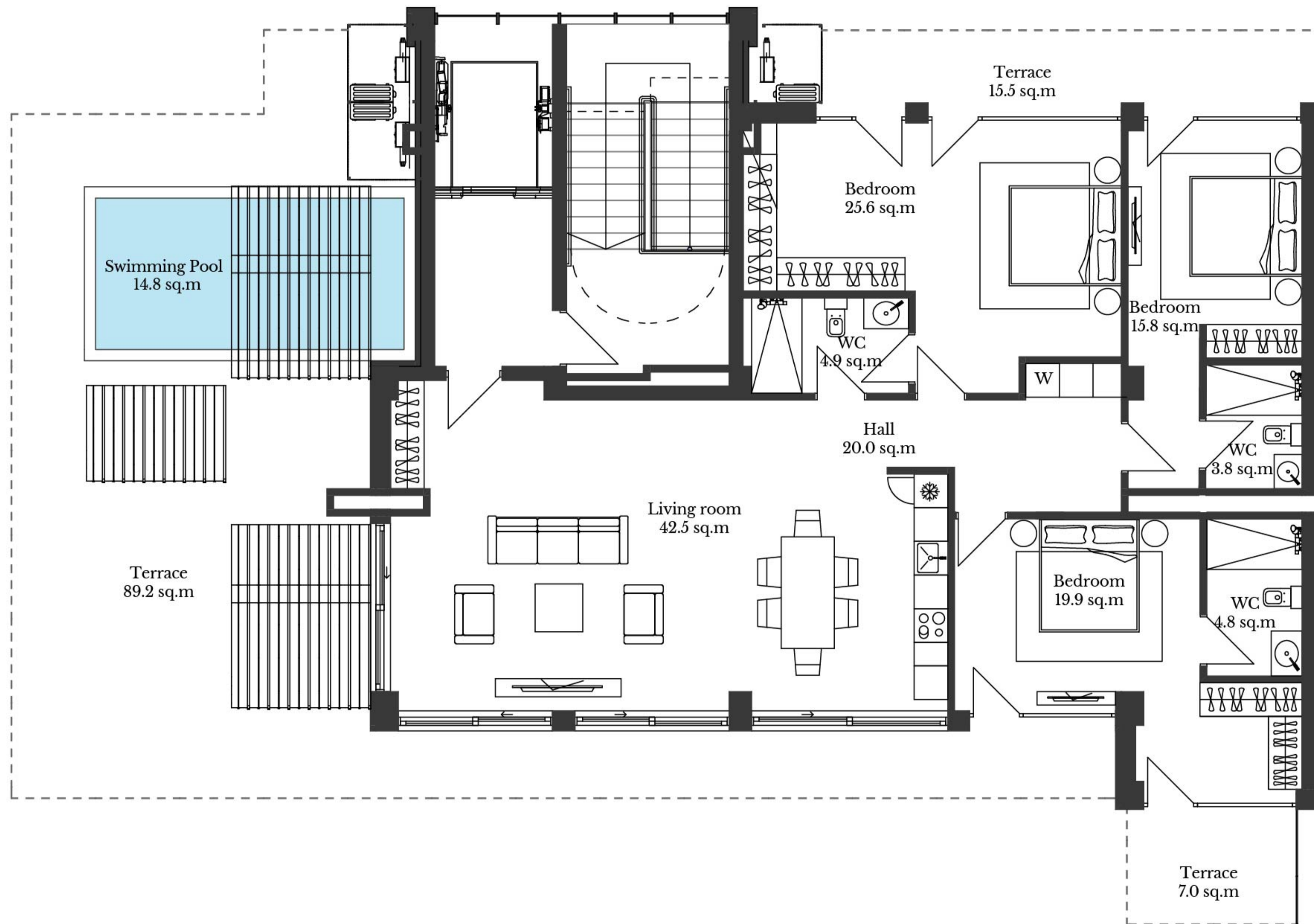
Apartment N 51	
Residential	44.7 sq.m
Terrace	26.7 sq.m
Total	71.4 sq.m

TWO-BEDROOM



Apartment N 65	
Residential	46.8 sq.m
Terrace	11.1 sq.m
Total	57.9 sq.m

PENTHOUSE



Apartment N 72	
Residential	143.9 sq.m
Terrace	111.7 sq.m
Swimming Pool	14.8 sq.m
Total	270.4 sq.m

36 - 39 FLOOR PLANS



I Floor / Blocks: 36 - 37 - 38 - 39



Typical Floors II & IV / Blocks: 36 - 37 - 38 - 39



Typical Floors III & V / Blocks: 36 - 37 - 38 - 39

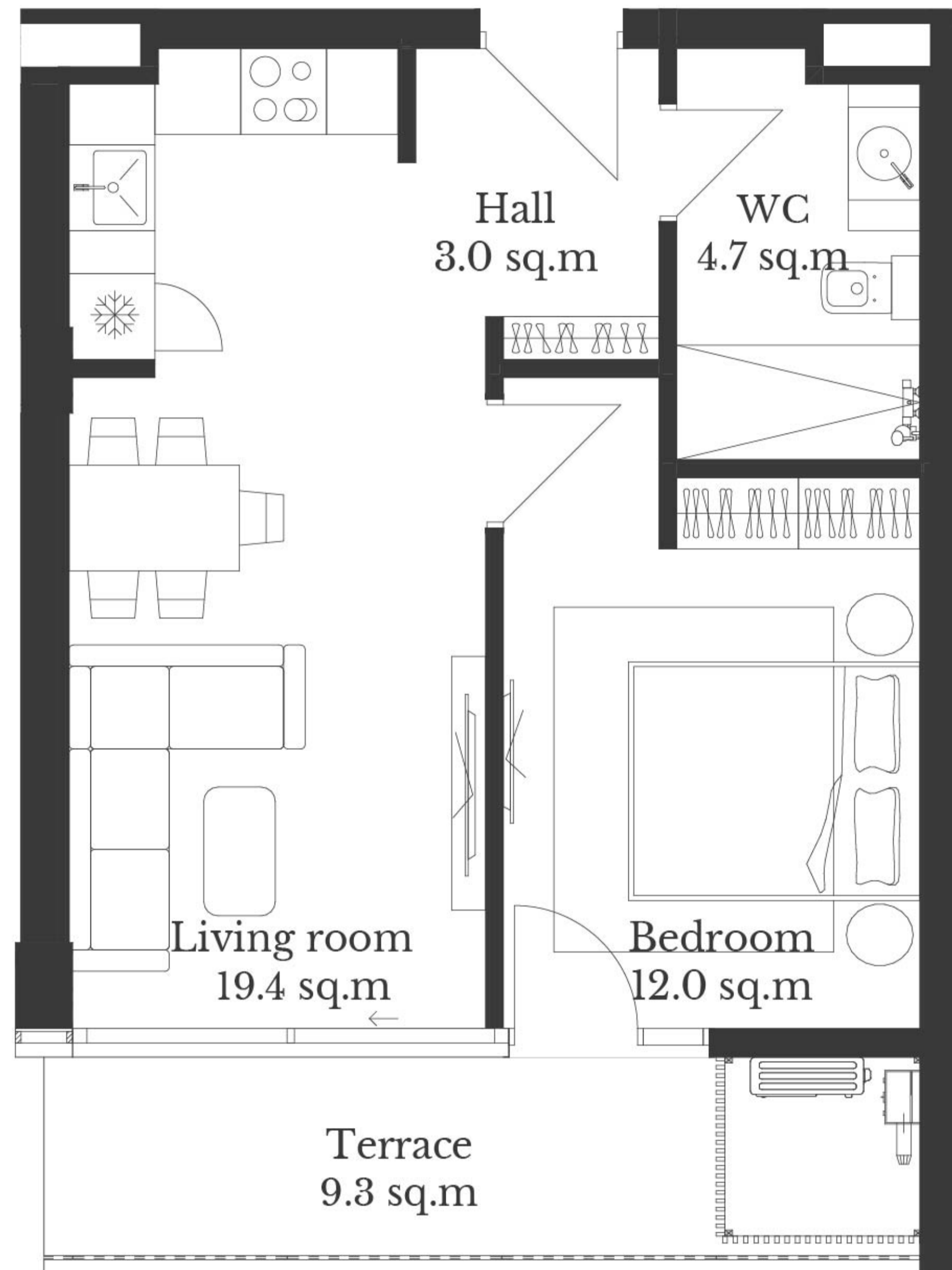


VI Floor / Blocks: 36 - 37 - 38 - 39



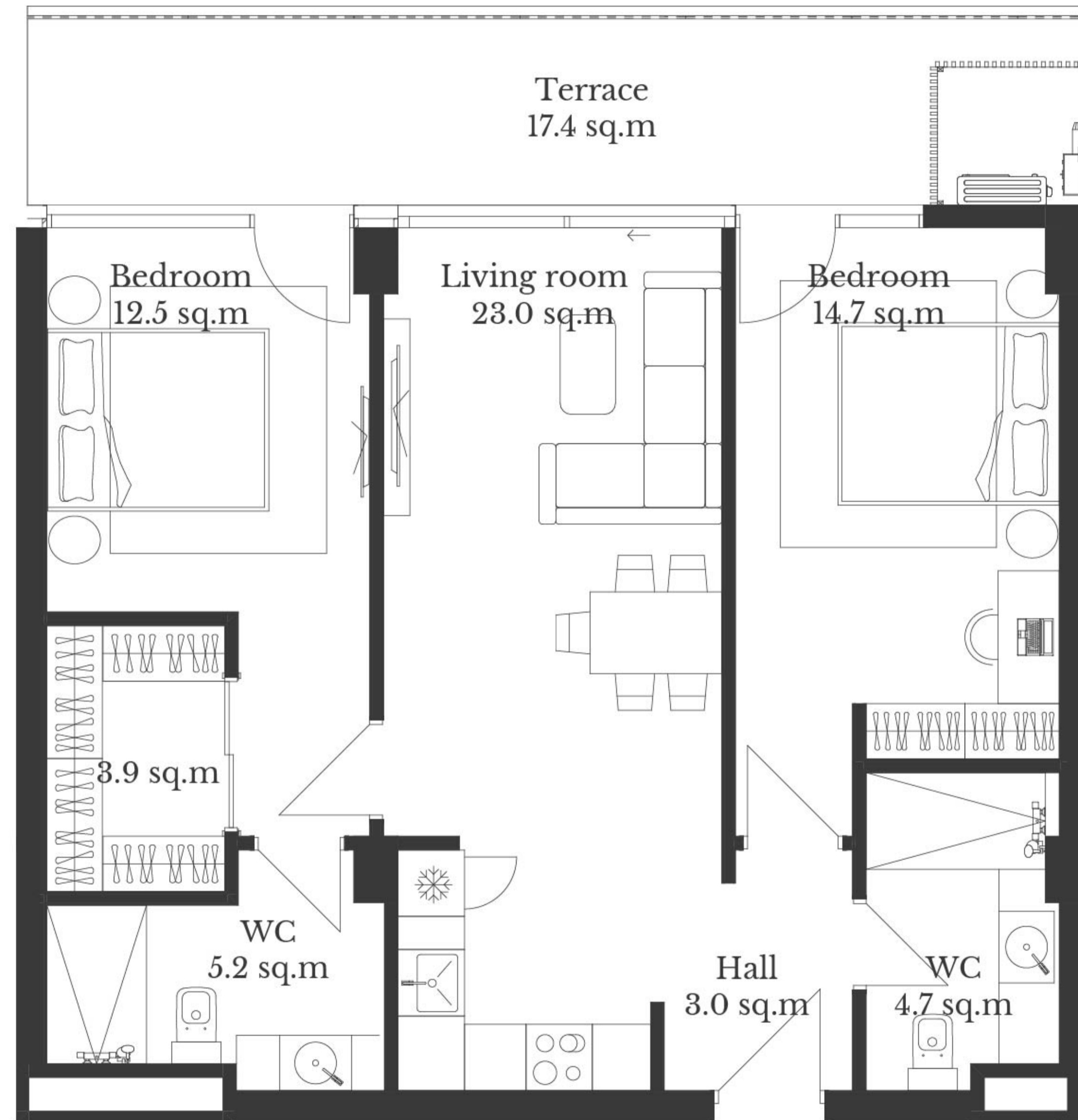
VII Floor / Blocks: 36 - 37 - 38 - 39

ONE-BEDROOM



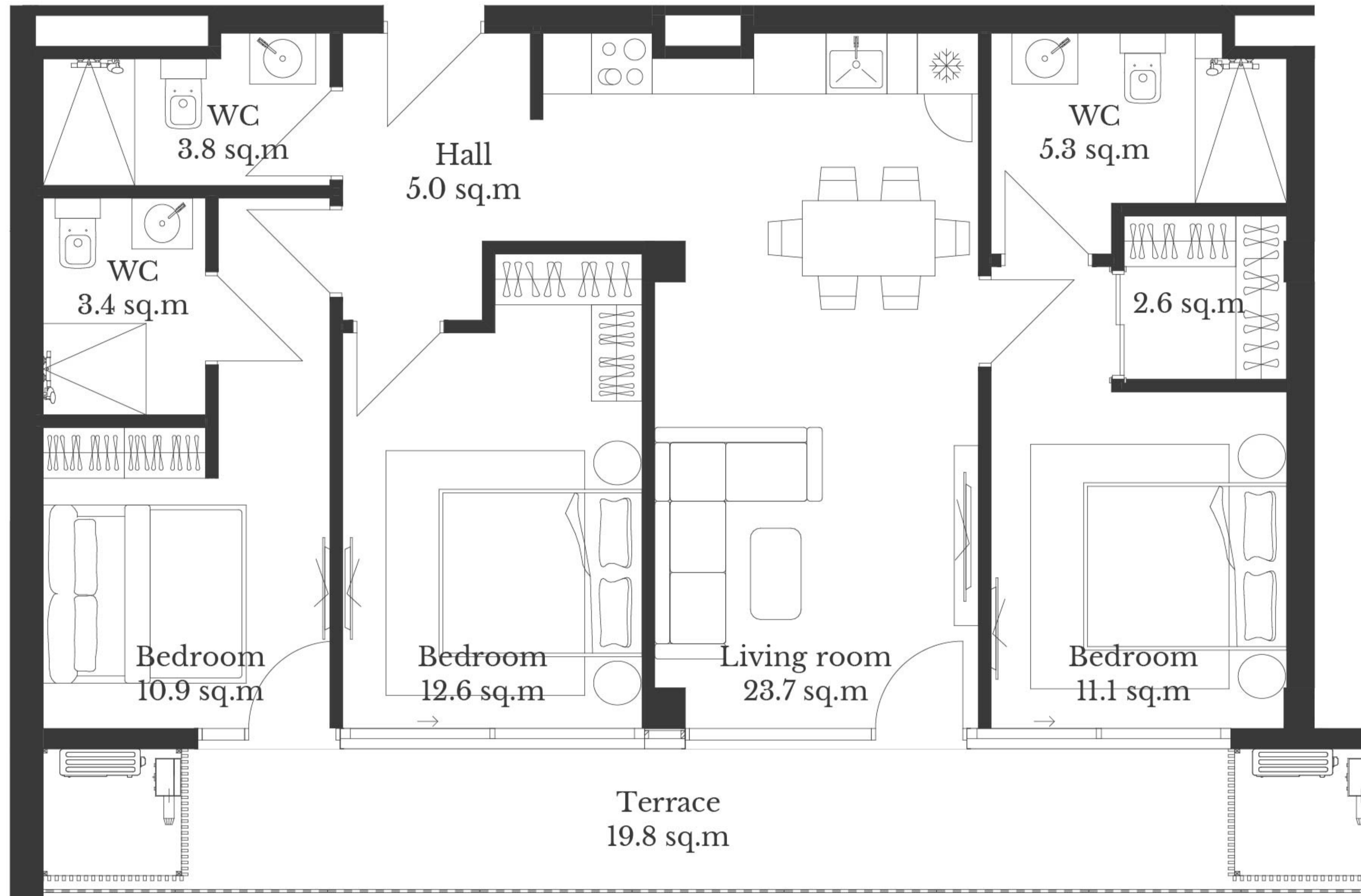
Apartment N 90	
Residential	41.6 sq.m
Terrace	9.3 sq.m
Total	50.9 sq.m

TWO-BEDROOM



Apartment N 94	
Residential	71.7 sq.m
Terrace	17.4 sq.m
Total	89.1 sq.m

THREE-BEDROOM



Apartment N 76	
Residential	84.3 sq.m
Terrace	19.8 sq.m
Total	104.1 sq.m

A large, white, stylized logo consisting of the letters 'V' and 'R' joined together. The 'V' is on the left and the 'R' is on the right, with a thick, rounded font style. The logo is centered in the upper half of the image, overlaid on a background of a modern building and trees.

VR

KRTSANISI
RESORT RESIDENCE

+995 599 26 11 11

+995 322 50 11 11

Sales@vr.ge

WWW.VR.GE

WWW.VRKRITSANISI.COM

N7 Grigol Volski Street, Tbilisi, Georgia

N37/39 Merab Kostava Street, Tbilisi, Georgia