



FOREST~BEACH
SHEKVETILI
BY PARAGRAPH



PARAGRAPH

CREATED FOR LEGENDARY LIVING

Where Nature Meets Luxury

In the heart of Shekvetili region, located between The Black Sea and pine tree forest, a remarkable story unfolds, daring to push the boundaries of innovation and luxury. Our daring vision promises a lifestyle where every sunrise paints a new adventure, and every sunset whispers stories of the past. As a resident of VR Shekvetili Forest-Beach • By Paragraph, you are not just acquiring a home; you are becoming a part of a community that values inspiration, celebrates nature, and cherishes every moment in their lives. VR Shekvetili Forest-Beach • By Paragraph invites you to write your chapter in this timeless story. Be among the few who have the privilege to call this visionary enclave home.





INVEST IN THE 5-STAR RESORT VR SHEKVETILI FOREST~BEACH | BY PARAGRAPH

\$600,000,000 – Investment

40 Hectares – Land Area

1200 Meters Long – Sandy Beach

ROI

14,5%

PAYBACK PERIOD

*7
Years*

*Apartments from
\$ 58,000*

*Apartments from
27 sq.m*



VR Shekvetili Forest~Beach • By Paragraph



EUROPEAN PROPERTY AWARDS

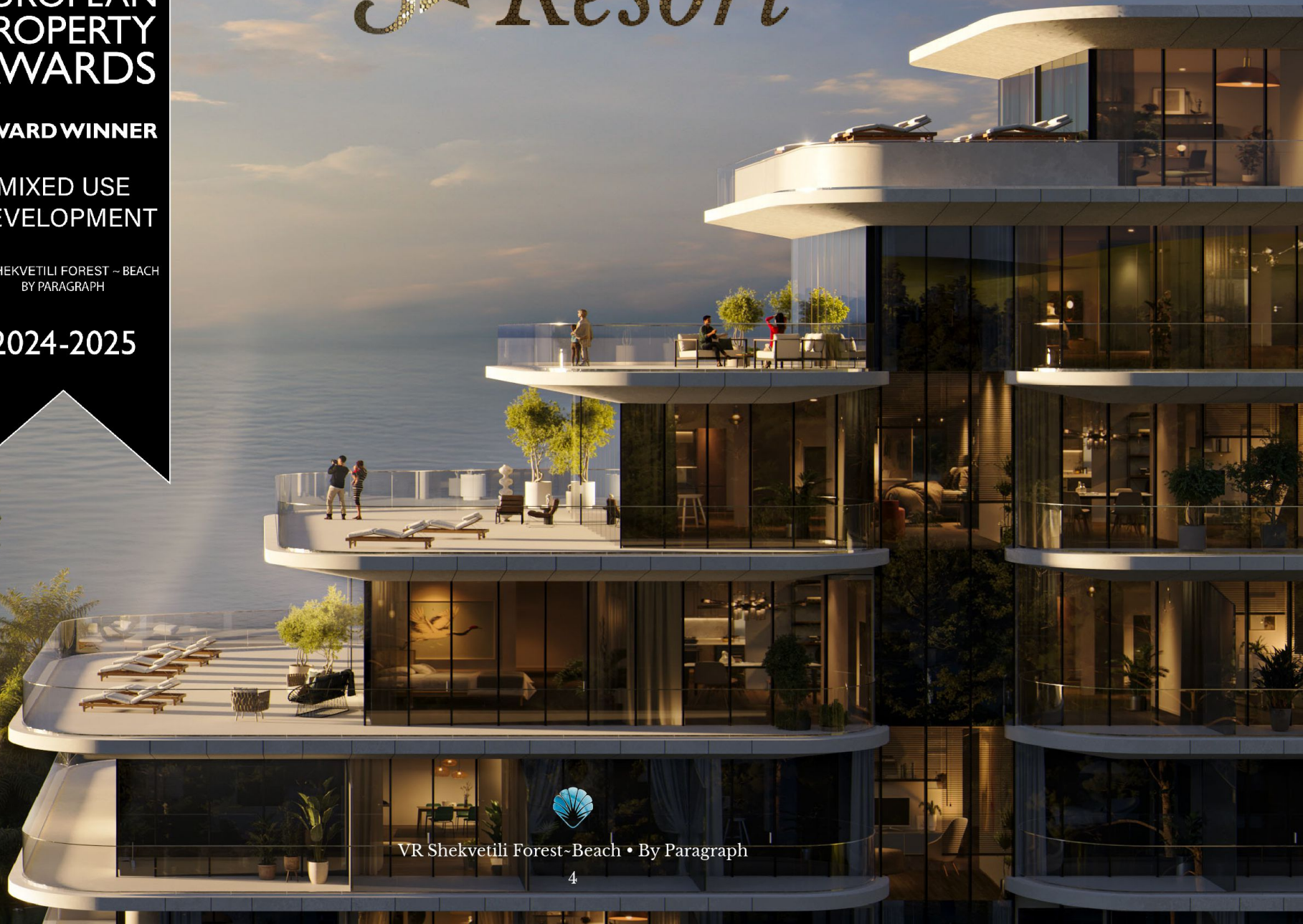
AWARD WINNER

**MIXED USE
DEVELOPMENT**

VR SHEKVETILI FOREST ~ BEACH
BY PARAGRAPH

2024-2025

5★ *Resort*



VR Shekvetili Forest~Beach • By Paragraph

WHY SHEKVETILI, GEORGIA?

Why Adjara & Shekvetili?

Premier Destinations for Tourism, Investment and Natural Beauty

- Simplicity and Transparency
- Attractive Tax Environment: only 5% tax on rental income
- No ownership restrictions for foreign citizens in Georgia
- Property registration in just one business day for only \$60
 - One of the safest country
- Pure sea water
- Bichvinta perennial pine forest
- Humid subtropical and ionized air
- Healing magnetic sand

Next to Our Project Can be Found

- Paragraph Resort & Spa – 100 m
 - Black Sea Arena – 1.8 km
 - Dendrological Park – 2.8 km
- Tsitsinatela Amusement Park – 5 km
 - Musicians Park – 1.7 km
 - Miniature Park – 5.6 km
- Kobuleti City Centre – 16 km
- Batumi City Centre – 50 km
- Batumi International Airport – 54 km





STORYLINE

SHEKVETILI, THE BLACK SEA, GEORGIA

Global Address and Dynamic Destination



This unique land plot area in the village of Shekvetili, stretches between the forest and the sea. This area, according to experts, is ideal for many types of flora and fauna. Shekvetili's main feature is black magnetic sand, the colour of which is due to the presence of magnetite in it. Rest in such a place will be favorable for people with sore joints and diseases of the cardiovascular system. It is good to rest here with children: the entry to the sea is sloping and shallow, there are no big waves and strong winds, and also it is possible to find many shells on the coast. Pine trees grow along the beach, giving the air a special smell, and in the evenings, many people prefer to walk in the eucalyptus park, where there are 35 sculptures of musicians and fountains.



Above from left: Tsitsinatela Amusement Park, Dendrological Park, Black Sea Arena



VR Shekvetili Forest~Beach • By Paragraph





VISION



Paragraph Resort & Spa Shekvetili, Autograph Collection

PARAGRAPH RESORT & SPA SHEKVETILI, AUTOGRAPH COLLECTION

Where Fantasy Became Reality



Discover genuine luxury at the Paragraph Resort & Spa Shekvetili, Autograph Collection, Georgia's most unique 5-star destination. Complete with exceptional amenities and world-class service, this family-friendly resort stands as the only one of its kind in all of Georgia. Bordered by an incredible pine forest on one side and the Black Sea on the other, this extraordinary project creates a fantasy world of pampering and relaxation. The project is also an ideal venue for hosting social events, weddings, and business gatherings in Shekvetili, thanks to an attentive planning team and expert chefs.



About the Paragraph Resort & Spa Shekvetili, Autograph Collection

VR SHEKVETILI FOREST~BEACH • BY PARAGRAPH

A majestic balance of luxury and innovation



Introducing the opportunity of a lifetime – your chance to own a piece of paradise next to the Paragraph Resort & Spa Shekvetili, Autograph Collection. VR Shekvetili Forest~Beach • By Paragraph offer a harmonious blend of natural beauty and world-class hospitality.

Our apartments are designed to provide you with the utmost comfort and style, ensuring that every moment spent here is nothing short of extraordinary. Whether you're seeking a permanent residence, a vacation home, or an investment opportunity, VR Shekvetili Forest~Beach • By Paragraph offer it all.

Upon completion of the project, residents will receive fully renovated apartments in a turn-key condition, complete with furnishings and home appliances.



About the VR Shekvetili Forest~Beach • By Paragraph



BLOCK B1

Apartments From - \$65,000
Delivery Condition:
Green Frame / Renovated
Completion Date: December 2027



BLOCK A

Apartments From - \$58,000
Delivery Condition: Fully renovated
with furniture and appliances
Completion Date: August 2027



BLOCK B2

Apartments From - \$65,000
Delivery Condition:
Green Frame / Renovated
Completion Date: August 2027



BLOCK C

Apartments From - \$55,000
Delivery Condition:
Green Frame / Renovated
Completion Date: December 2028



BLOCK A



Block A

BLOCK B1



Block B1

15

BLOCK B2



Block B2

16

BLOCK C



Block C
17

EXPERIENCE



A LUXURY DEVELOPMENT WITH A PRIVATE BEACH, SPANNING 40 HECTARES

Infrastructure



5-Star Apartments



*Air-Conditioned Relaxation Spaces
by the Pool*



*1200-Meter Bicycle and
Pedestrian Path*



Sports Fields and Gym



*1200-Meters-Long Protected,
Well-Equipped, Private Beach*



*Childrens Pool and
Entertainment Spaces*



*Entertainment
and Recreational Spaces*



Casino



*An 80-Meter Pool with
Views of the Black Sea*



Spa and Wellness Centre



Amphitheatre



Conference Hall



Indoor and Outdoor Pools



*1000 sq.m. for Authentic and Traditional
Restaurants from Different Countries*



Water Park



Shopping Mall



Infrastructure



Innovative Beach Clubs Featuring An 80-Meter Infinity Pool with Stunning Black Sea Views



80 Meter-Long Pool



1200 Meter Long Private Beach





Swimming Pool with Poolbar



Sports Fields



Spa & Wellness, Fitness Centre





Padel Tennis



Aquapark, Swimming Pool and Entertaining Spaces





Infinity Pool





View from Block B



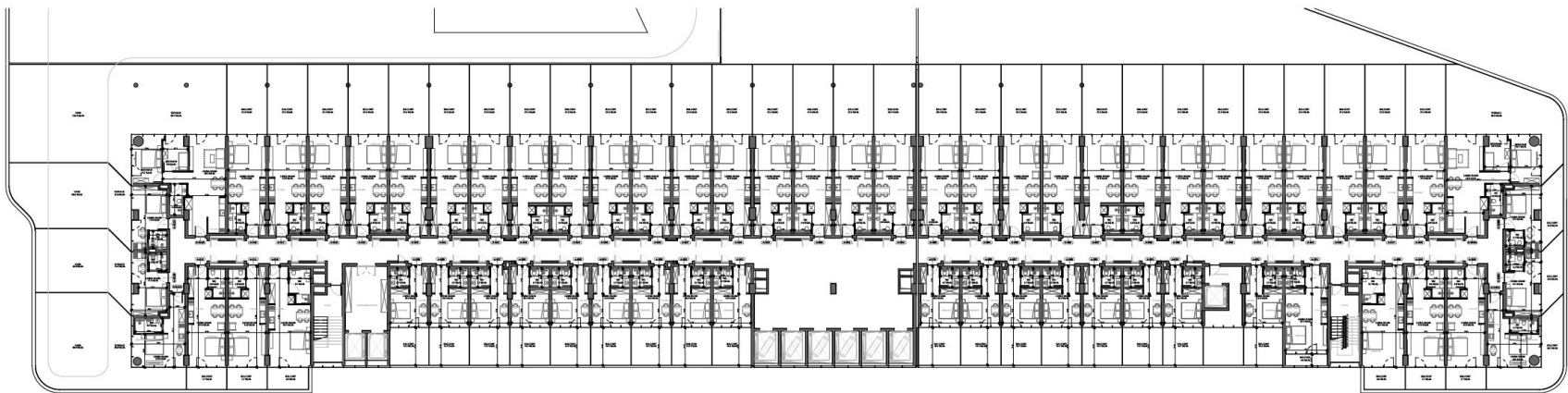
1200-Meter Coastline with Bicycle and Pedestrian Paths

APARTMENTS

The background is split vertically. The left half is white, and the right half is a textured blue. The word 'APARTMENTS' is centered horizontally, with 'APART' in white on the white background and 'MENTS' in blue on the blue background. The letters have a slight shadow or depth, making them appear to sit on the surface.

FLOOR PLAN OF BLOCK A

Sea View



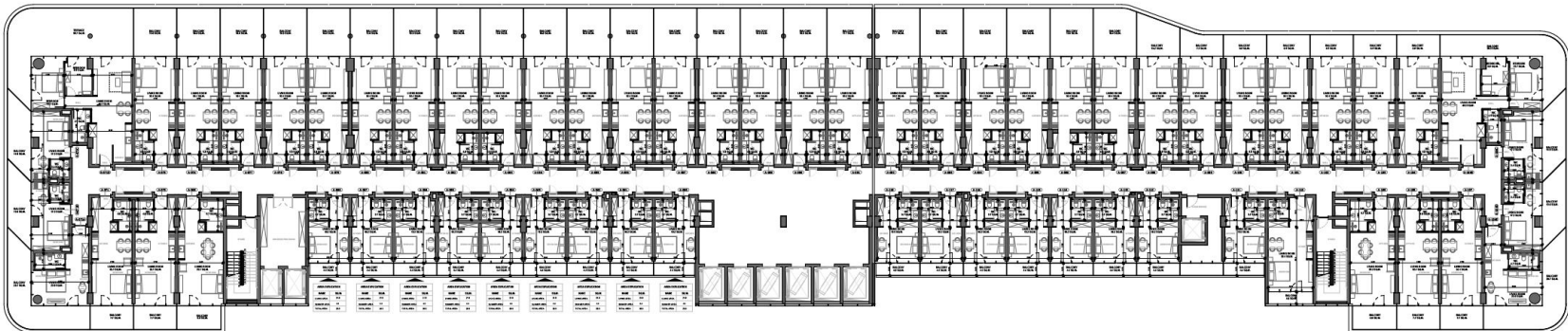
Forest View



Apartments From - 34 sq.m

FLOOR PLAN OF BLOCK A

Sea View

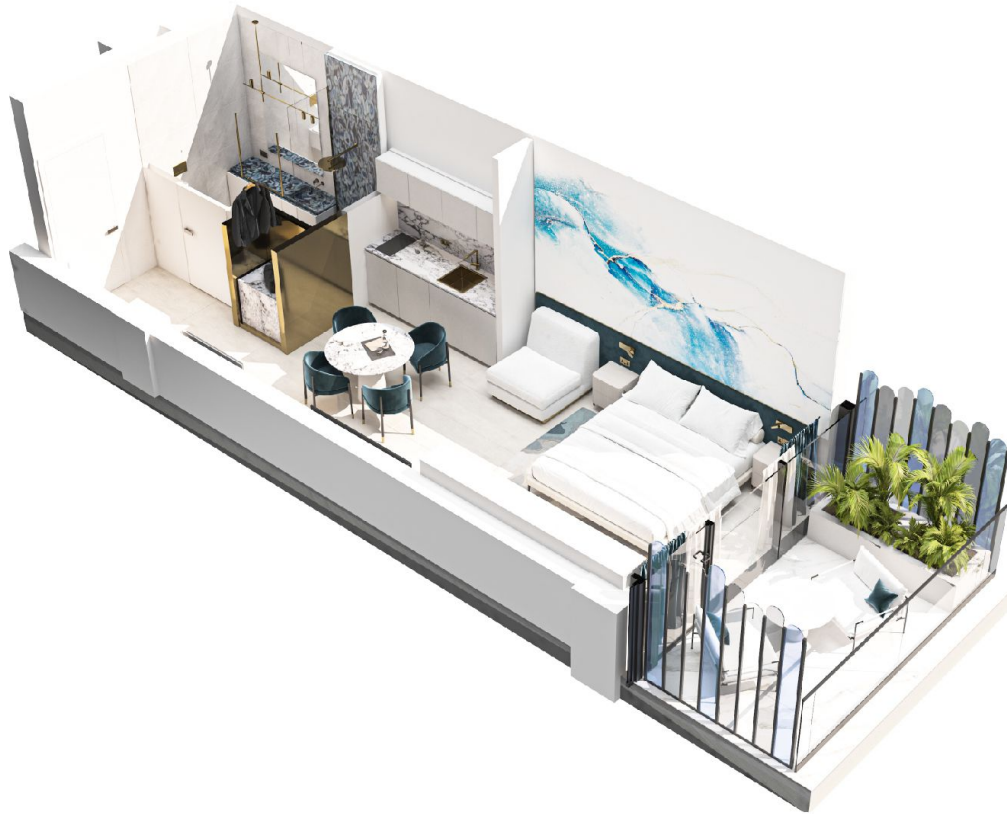


Forest View



Apartments From - 34 sq.m

STUDIO

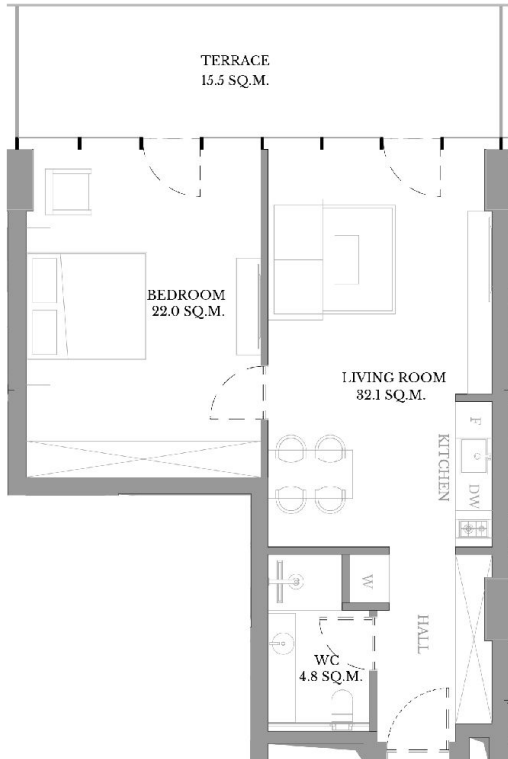


Total Area - 48.8 sq.m
Living Area - 36.9 sq.m
Summer Area - 6.9 sq.m

Studio apartments consist of one open space that combines the living area, bedroom, and kitchen in one room with a separate bathroom. This type of accommodation is good for students or people who don't need extra space. The apartments will be in turn-key condition.



ONE-BEDROOM



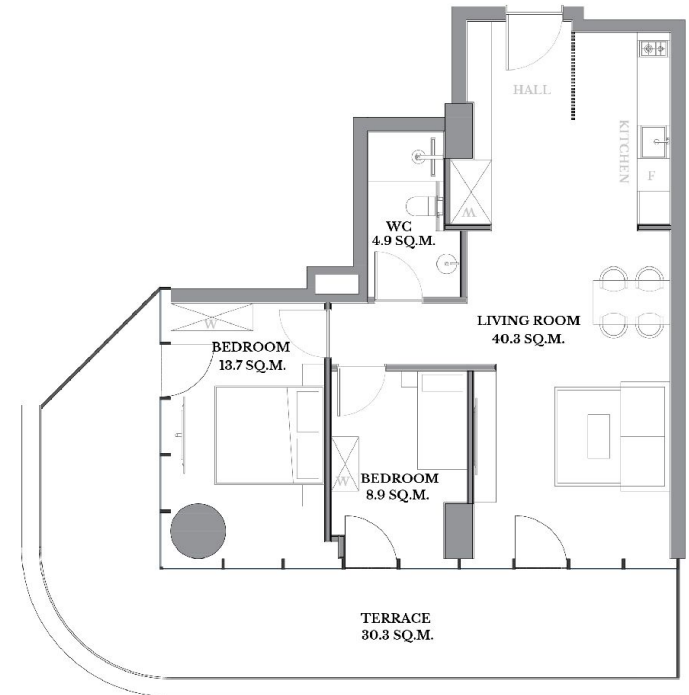
Total Area - 74.4 sq.m
Living Area - 58.9 sq.m
Summer Area - 15.5 sq.m

We offer one-bedroom apartments consisting of a separate bedroom, living room, kitchen and bathroom. These apartments offer several advantages and are suitable for different types of residents. The apartments will be in turn-key condition.



Types of Apartments - I Phase

TWO-BEDROOM

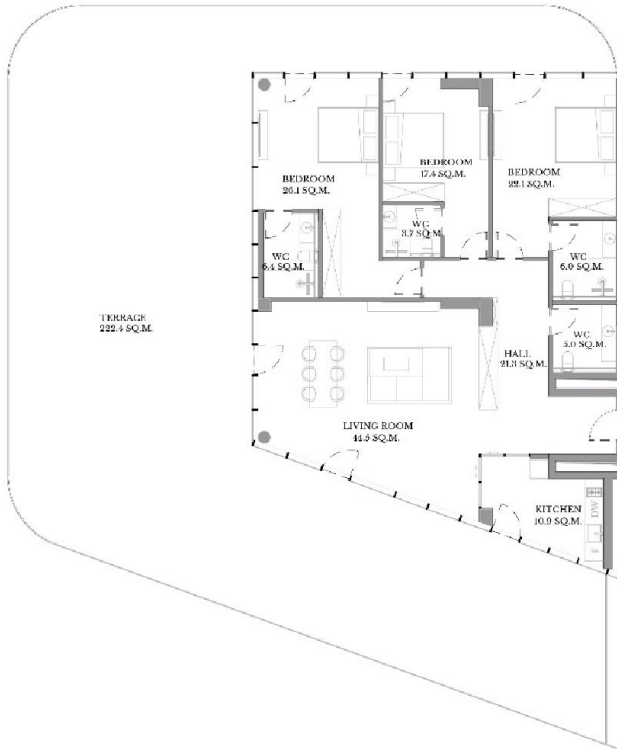


Total Area - 98.1 sq.m
Living Area - 67.8 sq.m
Summer Area - 30.3 sq.m

Two-bedroom apartments offer more space and flexibility than studio or one-bedroom apartments. Suitable for a variety of residents, including families, couples and individuals needing extra space. The apartments will be in turn-key condition.



PENTHOUSE



Total Area - **385.8 sq.m**
Living Area - **163.4 sq.m**
Summer Area - **222.4 sq.m**

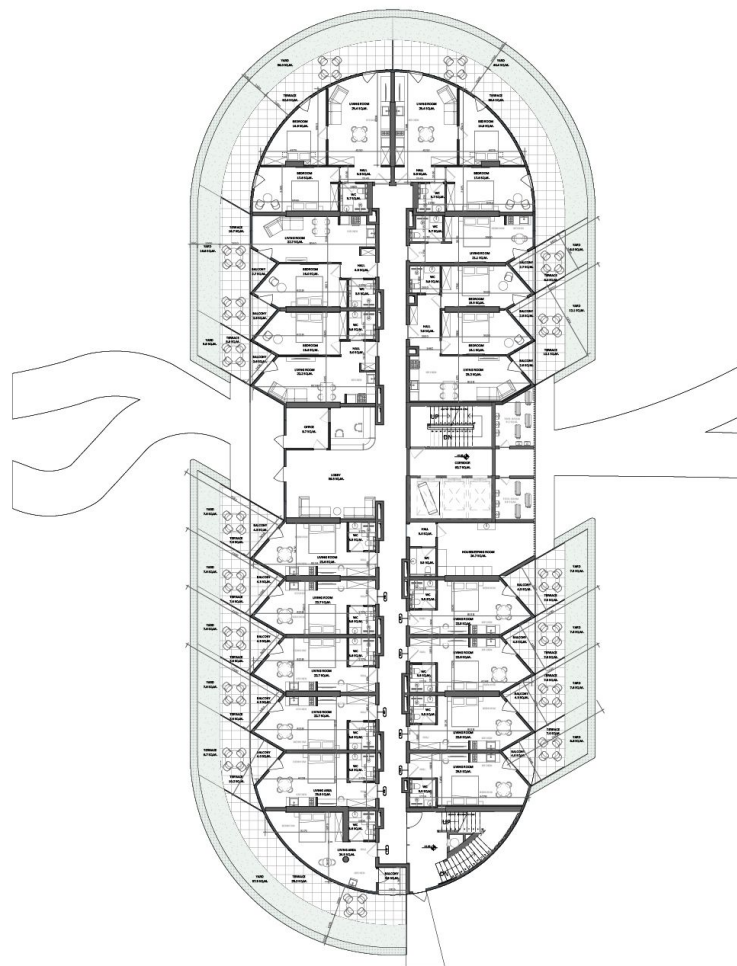
We offer Three-Bedroom of various sizes that have different kinds of advantages. Three-Bedroom Penthouses are located on the top floor of a residential building. Penthouses are known for their exclusivity, amazing views and premium features. The apartments will be in turn-key condition.



FLOOR PLAN OF BLOCK B1

Sea View

*Sea & Batumi
View*



*Sea & Paragraph
View*

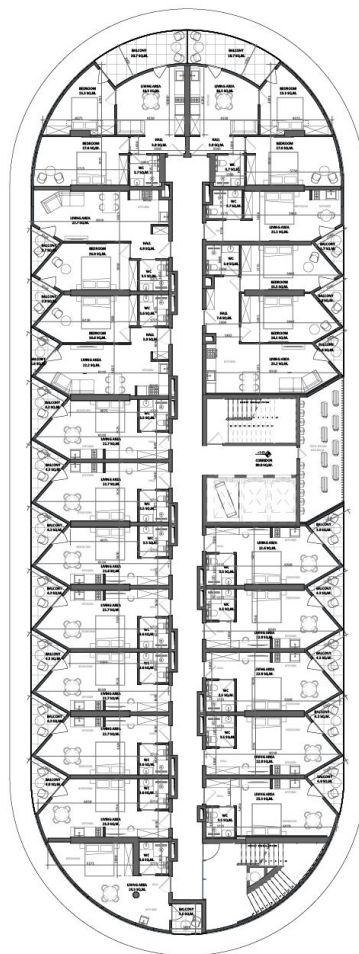
Block A & Forest View



Apartments From - 27 sq.m

FLOOR PLAN OF BLOCK B1

Sea View



*Sea & Batumi
View*

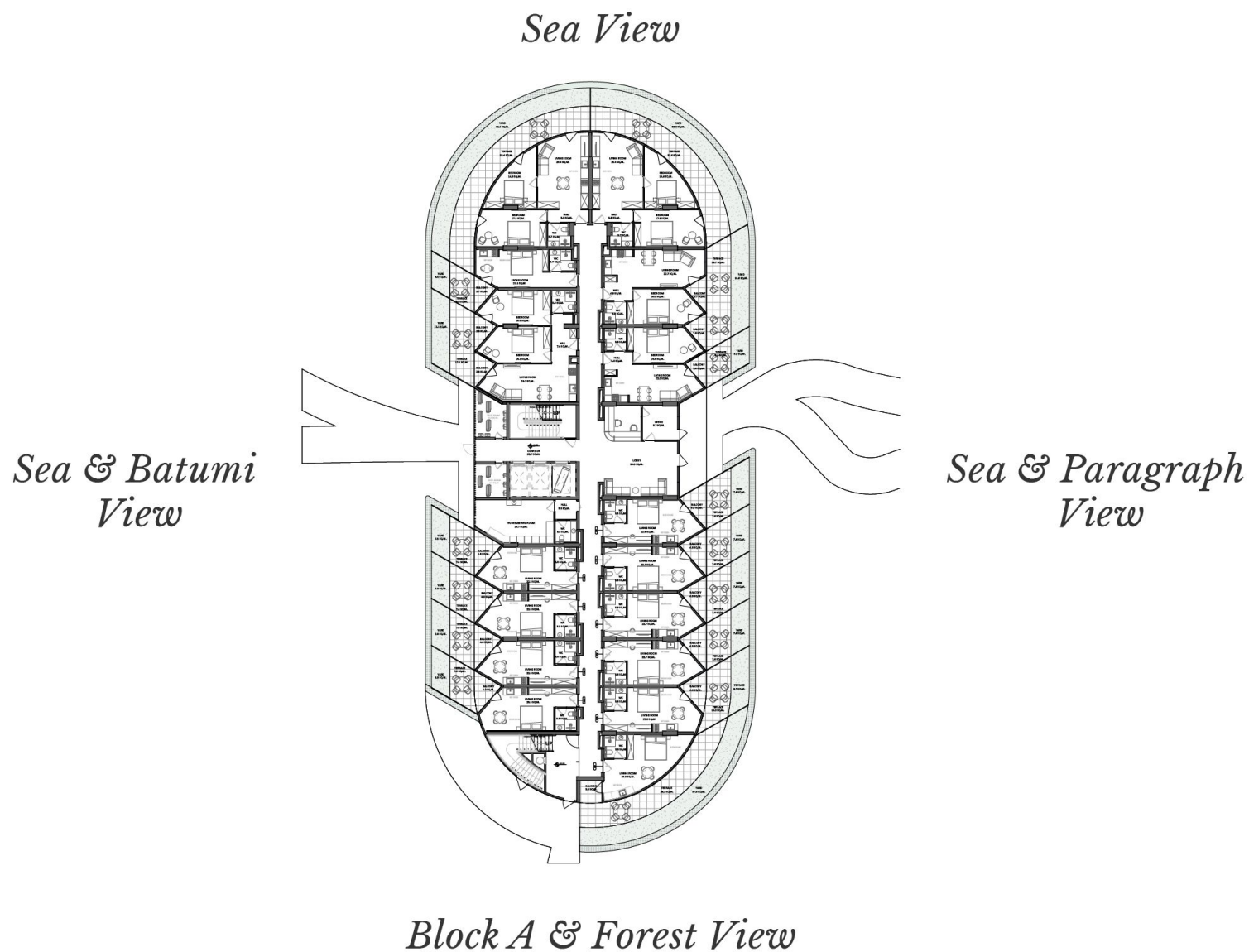
*Sea & Paragraph
View*

Block A & Forest View



Apartments From - 27 sq.m

FLOOR PLAN OF BLOCK B2



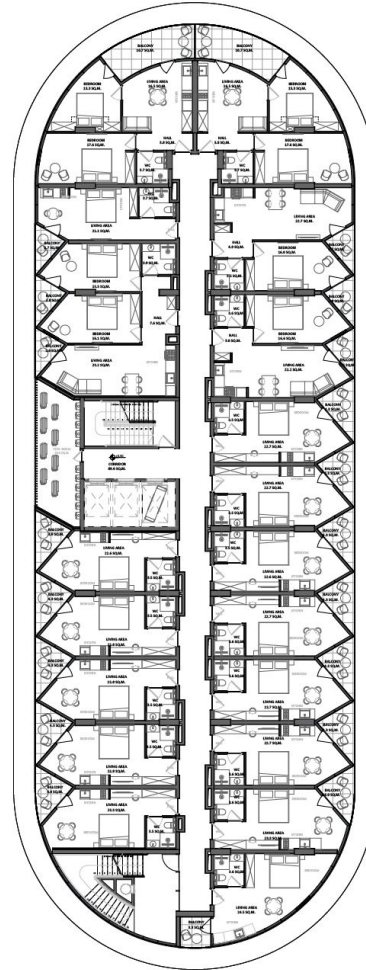
Apartments From - 30 sq.m

FLOOR PLAN OF BLOCK B2

Sea View

*Sea & Batumi
View*

*Sea & Paragraph
View*



Block A & Forest View

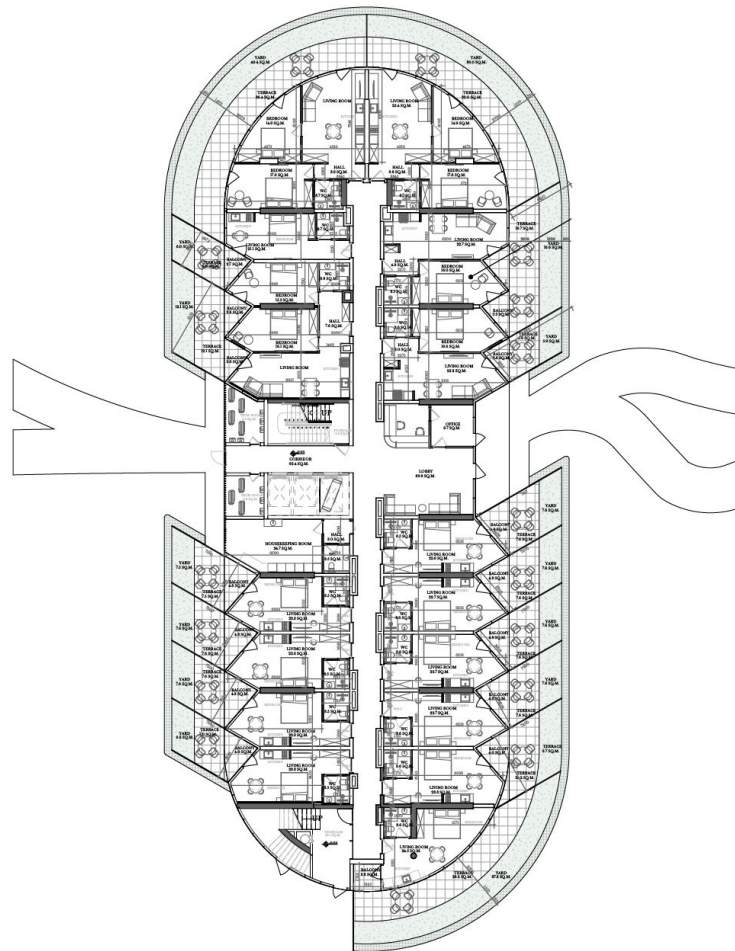


Apartments From - 30 sq.m

FLOOR PLAN OF BLOCK C

Sea View

*Sea & Batumi
View*



*Sea & Paragraph
View*

Block A & Forest View



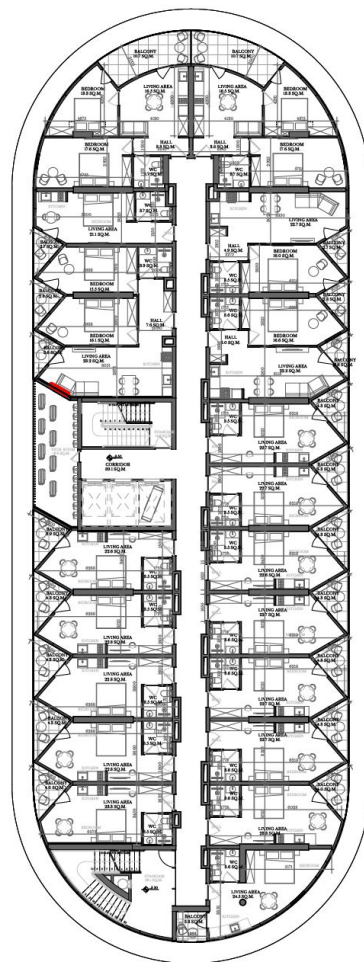
Apartments From - 27 sq.m

FLOOR PLAN OF BLOCK C

Sea View

*Sea & Batumi
View*

*Sea & Paragraph
View*



Block A & Forest View



Apartments From - 27 sq.m

INTERIOR



INTERIOR

Perfect Blend of Comfort and Style



Step into the world of VR Shekvetili Forest-Beach | By Paragraph, where every interior element is carefully crafted to offer the perfect blend of comfort and style. High-end materials and contemporary design elements create an inviting atmosphere that effortlessly blends with the surrounding beauty of nature.



Interior









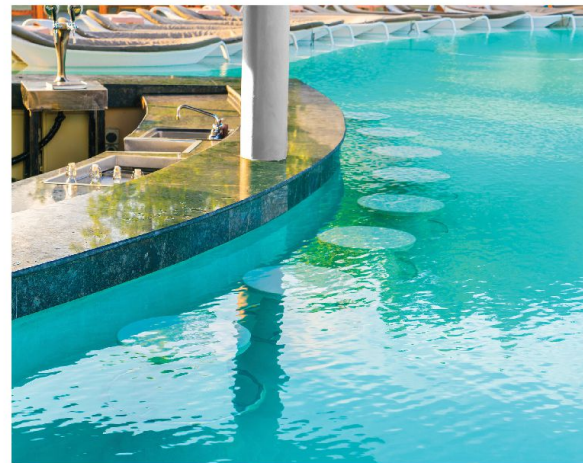
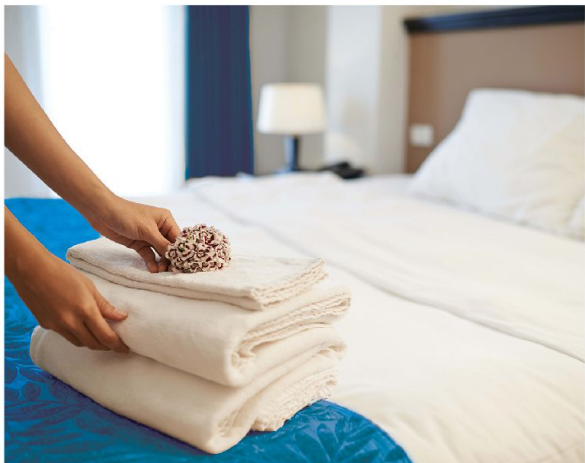


SERVICES

- *Complex Monitoring of Water Reservoirs* •
- *Fire System Services* •
- *Cleaning Service* •
- *24-Hour Security* •
- *Gardening Service* •
- *Parking* •
- *Concierge* •
- *Technical Support* •
- *Taking Care of Shared Spaces* •
- *Laundry Service* •
- *Transportation* •
- *Valet Parking* •
- *Grocery Services at the Door* •

YOUR KEY TO EXCEPTIONAL LIVING

A Remarkable Partnership with Paragraph



We're dedicated to delivering an extraordinary living experience. To make this promise a reality, we've partnered with the Paragraph, a name synonymous with exceptional hospitality. Due to the partnership, you can get premium quality, five-star experience, and seamless convenience.

By choosing VR Shekvetili Forest-Beach, you not only acquire a remarkable home but also unlock a gateway to legendary living, made possible by the exceptional hospitality services offered by Paragraph.



Partnership with Paragraph

PAYMENT TERMS

We strive to make our projects as affordable as possible for our customers, despite their high quality. That is why we offer payment terms tailored to you.

20%

Down-Payment

80%

Until Construction is Completed

Or **10 YEAR**

Internal

Installments

(20% lower compared to a mortgage loan)

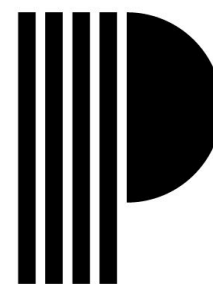




Night View of The I Phase Apartments



FOREST~BEACH
SHEKVETILI
BY PARAGRAPH



P A R A G R A P H

+995 599 26 11 11

+995 322 50 11 11

Sales@vr.ge

WWW.VR.GE

N37/39 Merab Kostava str., Tbilisi Georgia



Disclaimer: the project is not in any way associated or affiliated with Marriott International Inc. and its affiliated companies.