

# MULTIFUNCTIONAL BUILDING





# TABLE OF CONTENT

<i>Overview</i>	
About the MULTIFUNCTIONAL BUILDING . . . . .	1
<i>Location</i>	
The Multifunctional Building is an Investment and Residential Complex Located in Krtsanisi - the Most Diplomatic, Secure, and Environmentally Clean District of Tbilisi . . . . .	2
<i>Construction Timeline and Conditions</i>	
Construction has Already Started. Currently, Block A is Available for Sale and Will be Completed by December 30, 2028 . . . . .	3
<i>Investment Information</i>	
Investment Information About the MULTIFUNCTIONAL BUILDING . . . . .	4
<i>Internal Infrastructure</i>	
One of the Key Advantages of the Multifunctional Building is the Integration of all Essential and Important Facilities Within a Single Space . . . . .	5
<i>External Infrastructure</i>	
Where the Quality of Infrastructure Matches the Standard of Exceptional Living . . . . .	6
<i>Hotel-Standard Services</i>	
VR SIGNATURE – Your Comfort is Our Priority . . . . .	18
<i>Our Quality</i>	
Only Top-quality Materials are Used in the Construction of the Multifunctional Building . . . . .	20
Our Approach to Quality . . . . .	21
Green Frame Structure . . . . .	22
High-grade, Energy-efficient Building Materials . . . . .	23
<i>Investment Information</i>	
Payment Terms . . . . .	24
Selection of Hotel-type Apartments in the MULTIFUNCTIONAL BUILDING . . . . .	26



# MULTIFUNCTIONAL BUILDING

*A New, Unique Project by VR Krtsanisi Resort Residence*

## ABOUT

A new investment project by VR Krtsanisi Resort Residence

VR Krtsanisi Resort Residence proudly presents a new, unique project – the Multifunctional Building, the first of its kind in Krtsanisi. The Multifunctional Building integrates 5-star hotel-style apartments, a shopping center, and infrastructure for entertainment, sports and recreation in one space.

We offer commercial spaces and apartments in a profitable, developing environment where modern architecture, sophisticated design, and high standards converge. For your business, this means not just physical space but also the right audience, strong positioning, and long-term stability.

Multifunctional spaces are flexible and tailored to various types of activities. Here's what you'll find with us: boutiques, aesthetic clinics, hypermarket, cafes, office and entertainment spaces, and more.

### We Offer:

- A prestigious location
- High visitor flow from residents and guests alike
- Modern infrastructure

## US



# PRIME LOCATION

*The Multifunctional Building, an investment and residential complex, is located in Krtsanisi, Tbilisi's most diplomatic, safe, and environmentally clean district, offering stunning panoramic views of both the project and the city.*



**FREEDOM SQUARE - 5.2 KM**  
**OLD TBILISI - 4.1 KM**  
**AIRPORT - 18.4 KM**



A

*TOTAL AREA: 60,000 SQ.M.*

*BLOCK A - 9 FLOORS*

*BLOCK B - 8 FLOORS*

*BLOCK C - 7 FLOORS*

B

C

## Construction Timeline and Conditions

- Construction of the complex has begun. At this stage, Block A is available for sale, with construction underway and expected completion by December 30, 2028
- Condition: Green framework
- Renovation services (with furniture/appliances): Optional



# MULTIFUNCTIONAL BUILDING INVESTMENT

The Multifunctional Building is an investment product that allows residents to live in the complex while generating stable income from rented apartments, which can cover the property's cost.

VR Signature, an exclusive brand of VR Holding, ensures the rental and management of your apartment through an international partner company.

The Multifunctional Building is built with the same high construction quality as our other projects. For example, apartment owners will enjoy Schuco brand aluminum doors and windows made from premium materials, as well as elevators manufactured by KONE.

## Why investors choose Krtsanisi:

- Prestigious location
- Limited land resources leading to increasing property value
- Ecologically clean and tranquil environment
- Exceptional panoramic views of Tbilisi
- Multifunctional development and growing infrastructure

## Invest in a 5-star Multifunctional Project

- ROI: 14% annually
- Land plot area: 60,000 sq.m
- Hotel-style apartments: Starting at \$700 per month

# INFORMATION





# INTERNAL INFRASTRUCTURE

*Where infrastructure quality matches an exceptional lifestyle*

The advantage of the Multifunctional Building is the integration of essential and significant facilities in one space, saving time and energy, reducing costs, and simplifying the residents daily lives.

**Within the complex, you will find:**

- |                         |                  |                                       |
|-------------------------|------------------|---------------------------------------|
| • Hypermarkets          | • Banks          | • Spa and Wellness Center             |
| • Cafes and Restaurants | • Pharmacy       | • Entertainment and Relaxation Spaces |
| • Offices               | • Gyms           | • Aesthetics Center                   |
| • Co-working Spaces     | • Swimming Pools | • Indoor Padel Court                  |





# EXTERNAL INFRASTRUCTURE

Residents of the Multifunctional Complex will enjoy exclusive, premium facilities and activities, all integrated into the complex. The project is tailored to the needs of people of all ages and interests. This is a place where comfort, tranquility, and enjoyment converge.

- Children's Playgrounds
- Football
- Basketball
- Tennis
- Padel
- Mini-golf
- Bowling Club
- Gym
- Spa Center
- Amphitheater
- School
- Kindergarten
- Hippodrome
- Swimming Pool with Sandy Beach and Imitation of Sea Waves
- Multifunctional Center
- Cycling and Walking Paths
- 70% Recreational Area
- Premium Restaurants
- Wine Tasting Space and Cellar
- Conference Hall
- Entertainment Spaces





*Mini Golf Court*





*Amphitheatre*





*Padel Tennis*













*Kids Playgrounds*





*Recreational Areas in Every Phase of the Complex*





*45-Meter Pool with a Sandy Beach and Imitation of Sea Waves*





*Indoor Swimming Pool*





VR  
SPA

*Spa & Wellness Centre*





*Gym*



# HOTEL-STANDARD SERVICES

VR SIGNATURE

*Managed by International Company*

*YOUR COMFORT IS OUR PRIORITY*



Cleaning Service



Rent



24-hour Security



Gardening Service



Parking



Concierge



Technical Support



Taking Care of Shared Spaces,  
Halls, and Elevators



Room Service



Manager of the Complex



Monitoring of  
Water Reservoirs



Fire System Services



Laundry Service



Transportation



Valet Parking



Grocery Services at the Door



# OUR QUALITY

*Built to endure with the highest quality materials, every detail reflects our commitment to lasting excellence.*



# HIGHEST QUALITY MATERIALS



For the **Multifunctional Building**, we meticulously selected the best materials. Premium-quality **Fundermax** and **Grespania** adorn our facades, ensuring durability and timeless elegance. Shared spaces feature Italian marble flooring and high-quality laminated tiles. Internal marble staircases and stainless steel railings further enhance these spaces. Every detail emphasizes our commitment to quality.



# OUR COMMITMENT TO QUALITY

*Attention to Every Detail*



We have chosen the highest-quality materials, such as **Schuco** aluminum doors and windows, exclusive Ukrainian-made iron doors, and Italian locks, seamlessly blending design, safety, and sophistication. Additionally, the project features **KONE** and **OTIS** elevators for vertical mobility.



# GREEN FRAME CONDITION



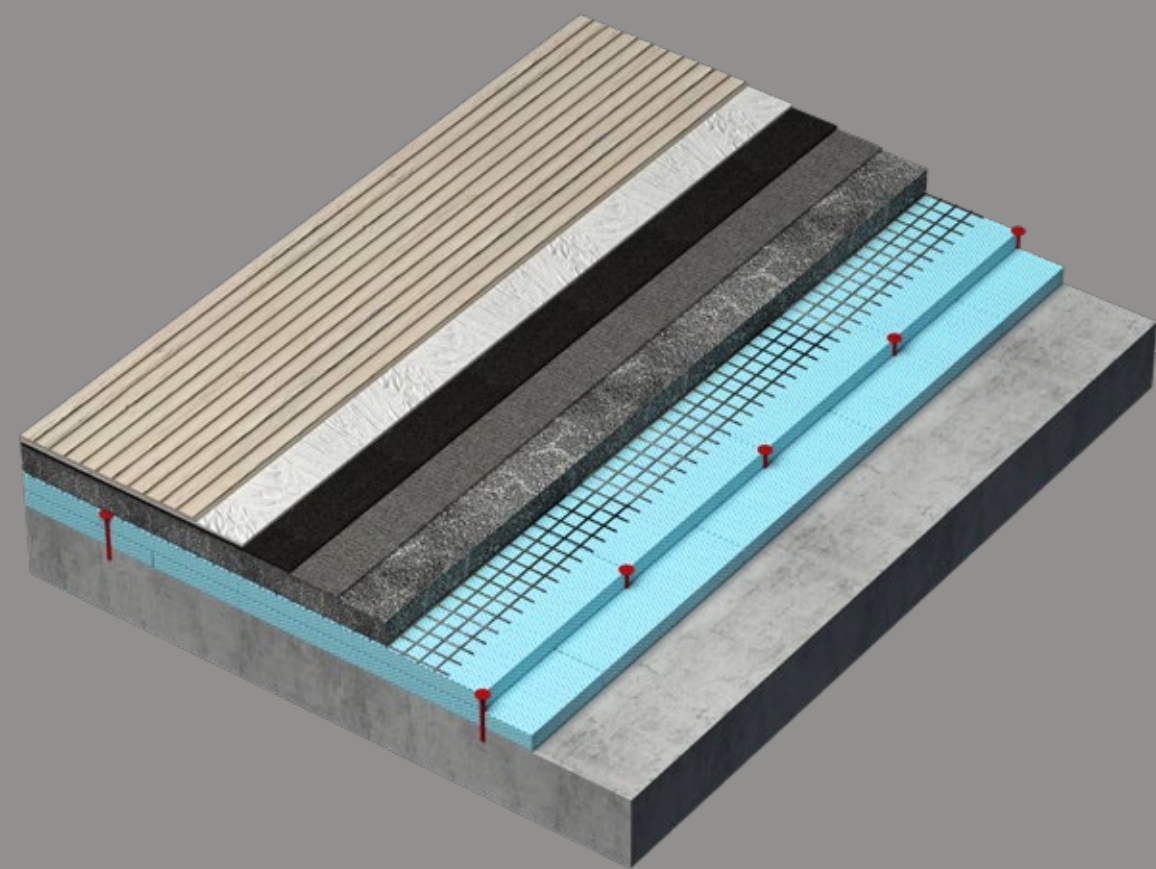
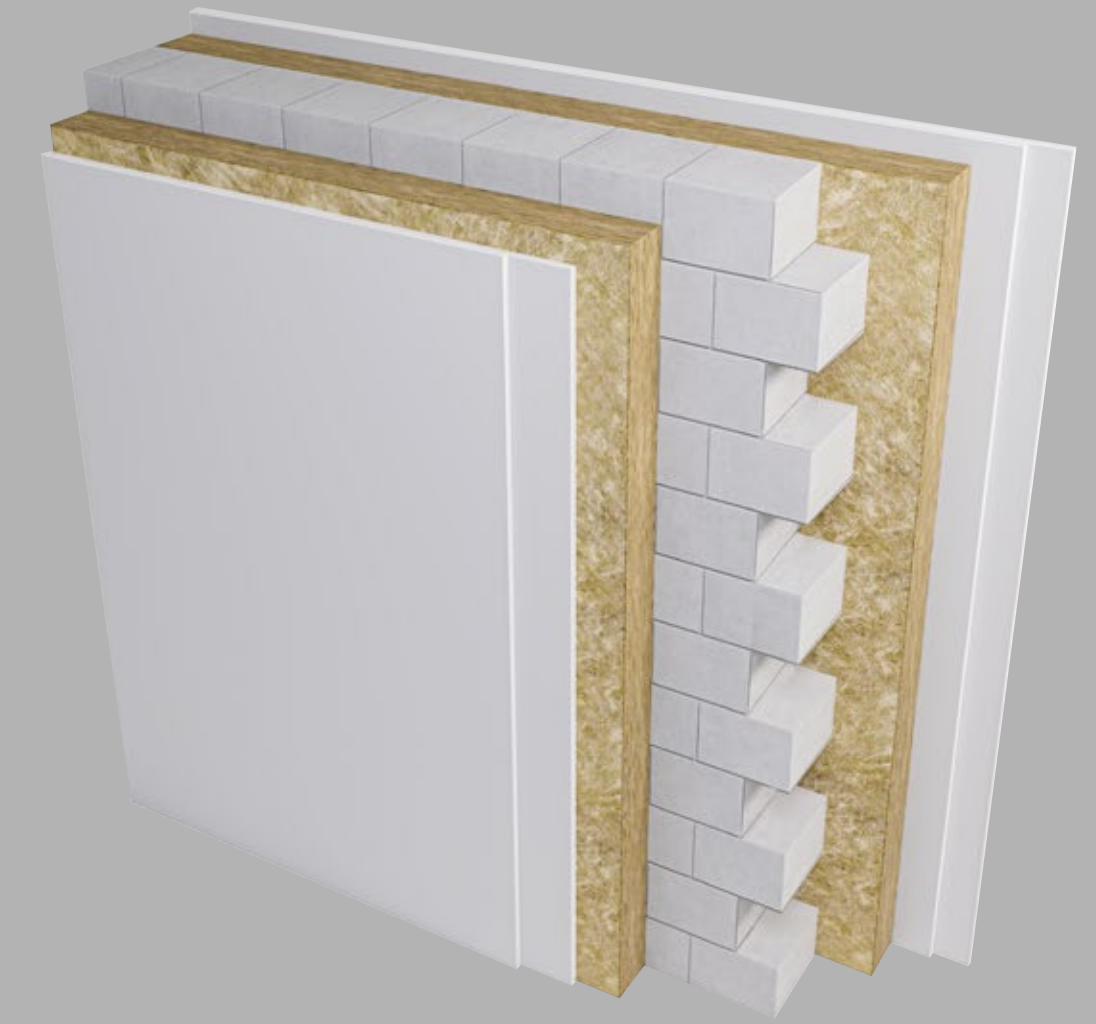
*Investment apartments are delivered in green framework condition*

- Completed partitions
- Sewage pipes installed at connection points
- Heating pipes (for sectional or panel radiators)
- Electrical wiring points
- Internet
- Television
- Intercom
- Screeded flooring
- Iron door
- Schuco aluminum doors and windows
- Frost-resistant granite-tiled balcony
- Centralized heating and cooling system

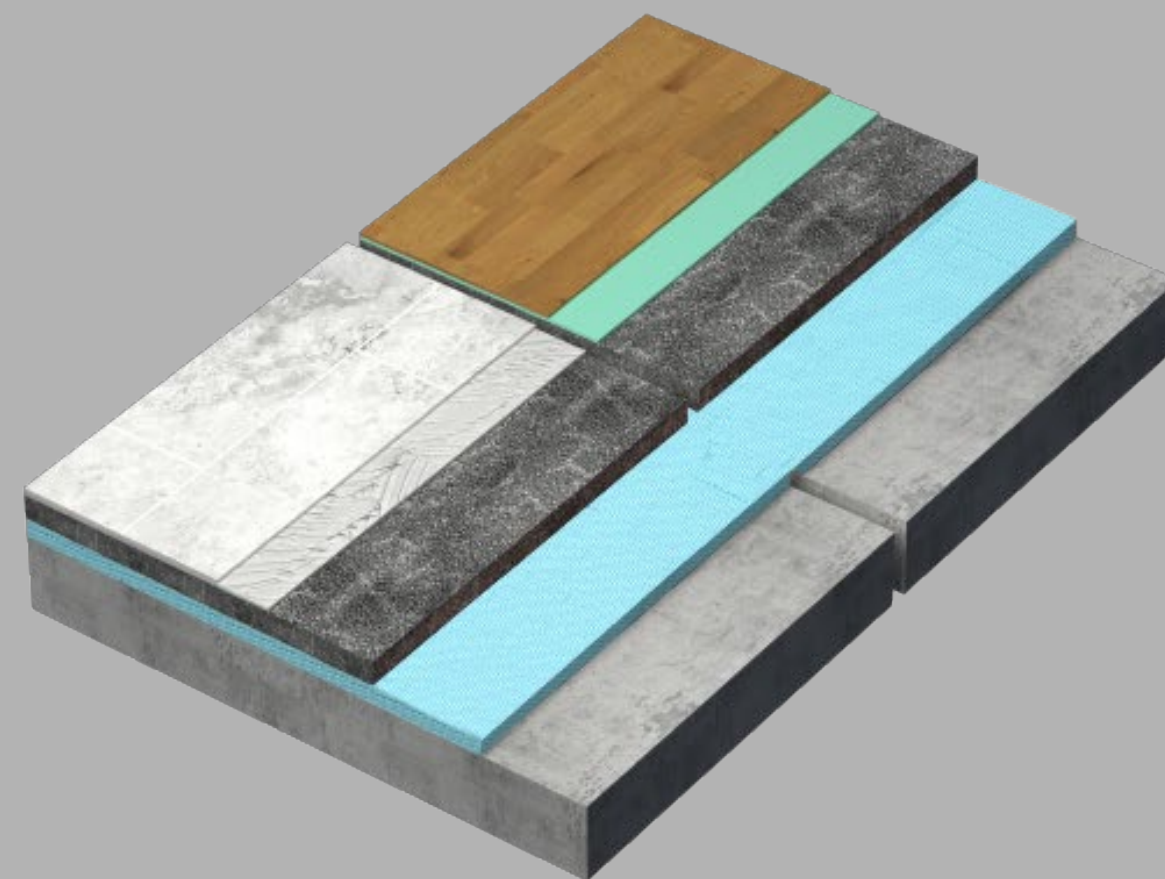


# QUALITY LIKE NO OTHER

*Energy-Efficient Building Materials*



- Monolithic Concrete Wall
- Composite Tile
- Aluminum Bracket



- Stone Wool Insulation
- Exterior Wall Detail
- Stone Wool Thermal

- Insulation - 50 mm
- Detail of Partition Wall
- Ceramic Granite Tile - 10 mm
- Detail of the Roof of the Building
- Glue Cement - 5 mm
- Double Waterproofing
- Stretched Floor - 60 mm
- Reinforcement Mesh
- Double Thermal Insulation (XPS) - 100 mm
- Laminated Parquet - 10 mm
- The Lower Layer of Laminate - 3 mm
- Thermal Insulation - 50 mm
- Monolithic Layer of Concrete - 220 mm



# PAYMENT TERMS

*Multifunctional Building offers you a unique opportunity to purchase premium class apartments starting at just \$700 per month with a 10-year internal installment plan—without the need for income verification or salary confirmation*

# 10 YEAR

## INSTALLMENT PLAN

Starting at Only

# \$700

Per month!

# 14%

ROI

Apartments From

# 32.6

sq.m.

# 2028

Completion Date



# PAYMENT TERMS

*We strive to make our projects as affordable as possible for our customers, despite their high quality. That is why we offer payment terms tailored to you. For additional convenience, residents can pay both monthly and quarterly.*

Down-Payment **20%**

**80%** Distributed Before  
the Completion of  
Construction

On First  
Deposit of 30%

**10%**  
Discount

**10%** Discount for  
Single-Payment



# FLOOR PLANS





# RESIDENTIAL LEVEL 03

## BLOCK A

### APARTMENT 12 (TYPE 1+0\_D)

AREA NAME	sq.m.
LIVING AREA	24.32
SUMMER AREA	35.15
TERRACE	25.70
TERRACE	9.45
TOTAL AREA	59.47

### APARTMENT 11 (TYPE 2+1\_A)

AREA NAME	sq.m.
LIVING AREA	74.76
SUMMER AREA	82.95
TERRACE	42.76
TERRACE	40.19
TOTAL AREA	157.71

### APARTMENT 9,10 (TYPE 1+1\_A)

AREA NAME	sq.m.
LIVING AREA	70.3
SUMMER AREA	18.9
TOTAL AREA	89.2

### APARTMENT 8 (TYPE 1+0\_B)

AREA NAME	sq.m.
LIVING AREA	33.04
SUMMER AREA	9.45
TOTAL AREA	42.49

### APARTMENT 7 (TYPE 1+0\_A)

AREA NAME	sq.m.
LIVING AREA	33.36
SUMMER AREA	9.45
TOTAL AREA	42.81

### APARTMENT 6 (TYPE 2+1\_A)

AREA NAME	sq.m.
LIVING AREA	74.76
SUMMER AREA	40.18
TOTAL AREA	114.94

### APARTMENT 13 (TYPE 1+0\_D)

AREA NAME	sq.m.
LIVING AREA	24.32
SUMMER AREA	35.15
TERRACE	25.70
TERRACE	9.45
TOTAL AREA	59.47

### APARTMENT 14 (TYPE 2+1\_B)

AREA NAME	sq.m.
LIVING AREA	70.27
SUMMER AREA	61.60
TERRACE	21.42
TERRACE	40.18
TOTAL AREA	131.87

### APARTMENT 1 (TYPE 1+0\_F)

AREA NAME	sq.m.
LIVING AREA	40.54
SUMMER AREA	18.90
TOTAL AREA	59.44

### APARTMENT 2 (TYPE 1+0\_B)

AREA NAME	sq.m.
LIVING AREA	32.90
SUMMER AREA	9.45
TOTAL AREA	42.35

### APARTMENT 3 (TYPE 1+0\_A)

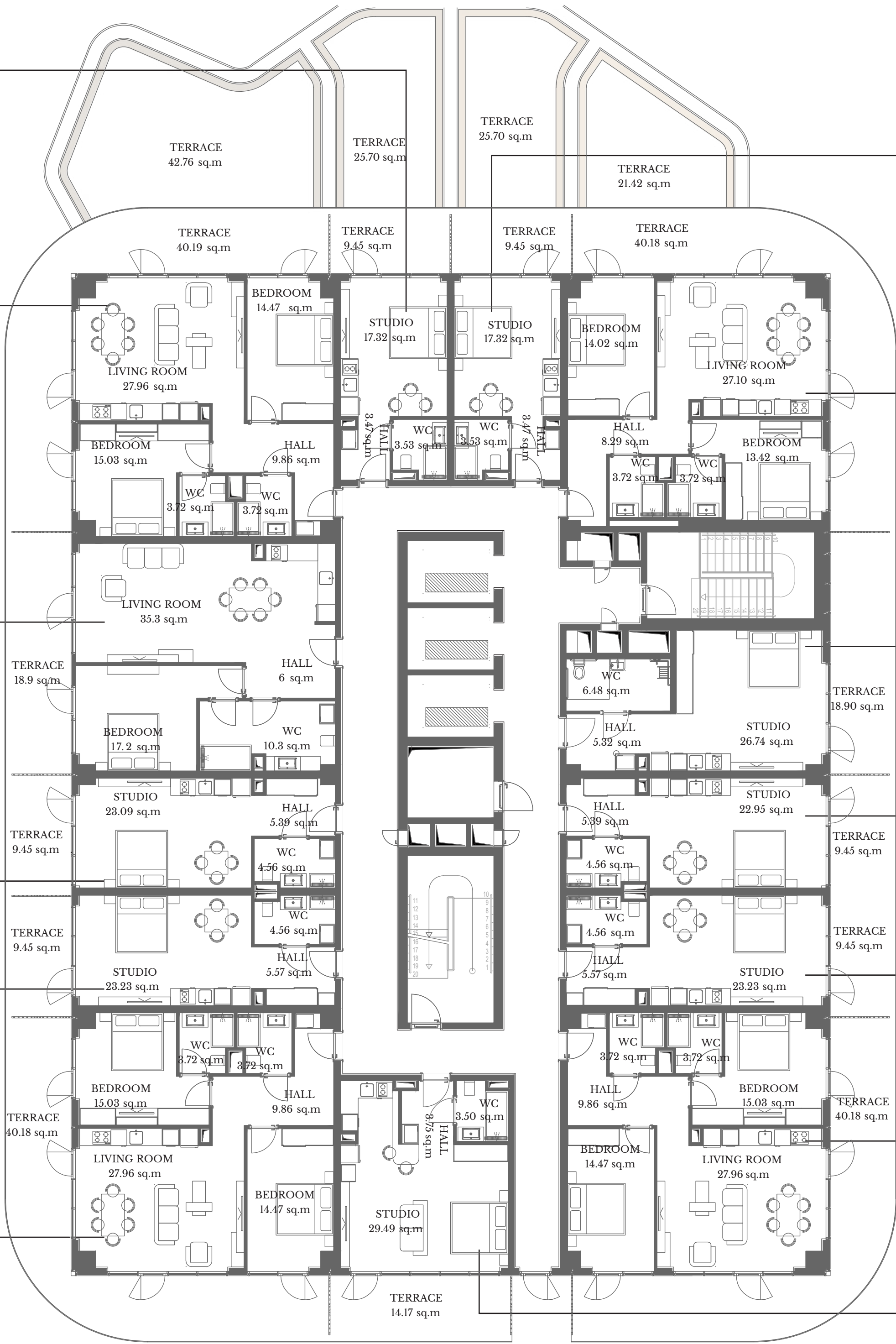
AREA NAME	sq.m.
LIVING AREA	33.36
SUMMER AREA	9.45
TOTAL AREA	42.81

### APARTMENT 4 (TYPE 2+1\_A)

AREA NAME	sq.m.
LIVING AREA	74.76
SUMMER AREA	40.18
TOTAL AREA	114.94

### APARTMENT 5 (TYPE 1+0\_G)

AREA NAME	sq.m.
LIVING AREA	36.74
SUMMER AREA	14.17
TOTAL AREA	50.91





# RESIDENTIAL LEVEL 04

## BLOCK A

### APARTMENT 27 (TYPE 1+0\_D)

AREA NAME	sq.m.
LIVING AREA	24.32
SUMMER AREA	9.45
TOTAL AREA	33.77

### APARTMENT 26 (TYPE 2+1\_A)

AREA NAME	sq.m.
LIVING AREA	74.76
SUMMER AREA	40.18
TOTAL AREA	114.94

### APARTMENT 24,25 (TYPE 1+1\_A)

AREA NAME	sq.m.
LIVING AREA	70.3
SUMMER AREA	18.9
TOTAL AREA	89.2

### APARTMENT 23 (TYPE 1+0\_B)

AREA NAME	sq.m.
LIVING AREA	33.04
SUMMER AREA	9.45
TOTAL AREA	42.49

### APARTMENT 22 (TYPE 1+0\_A)

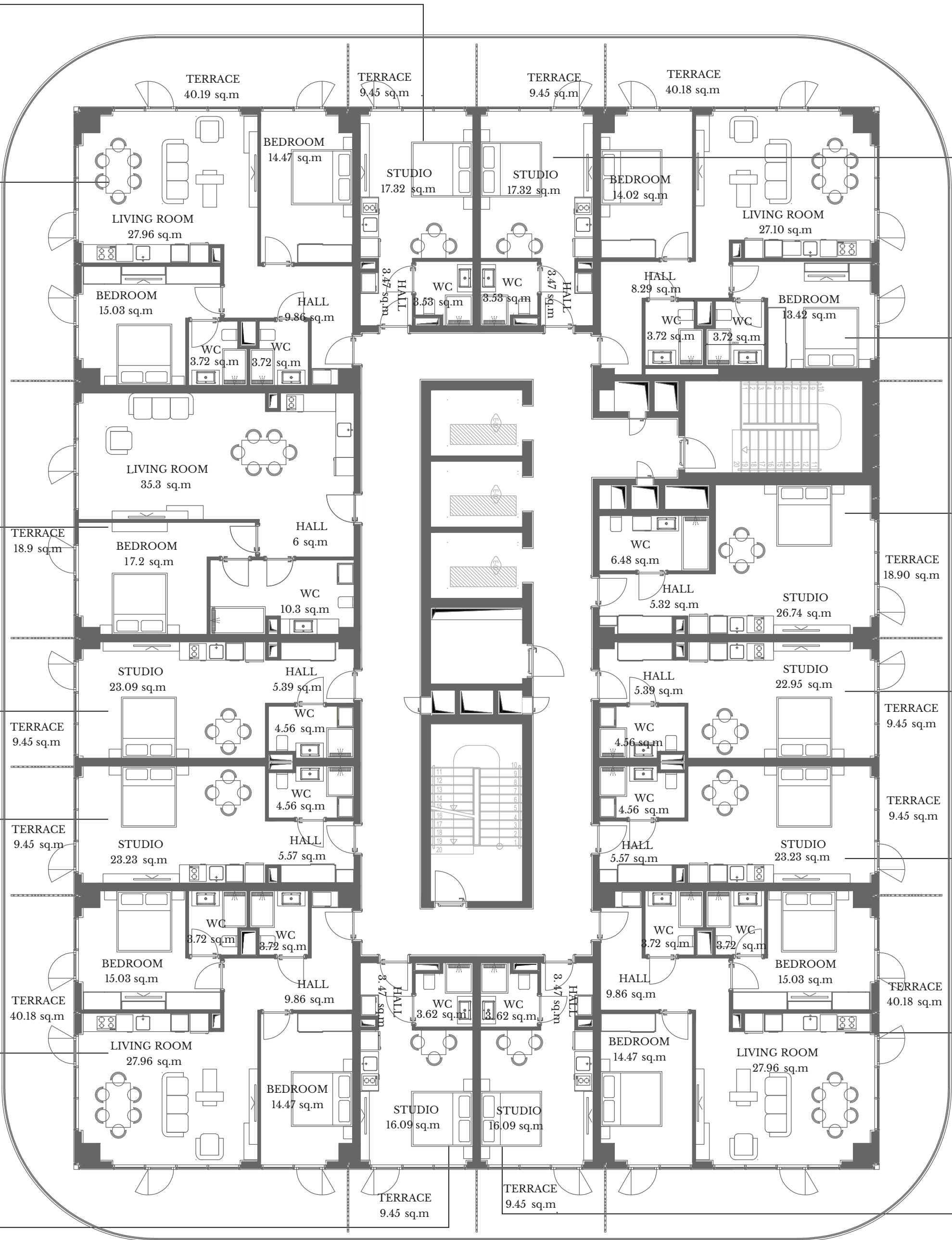
AREA NAME	sq.m.
LIVING AREA	33.36
SUMMER AREA	9.45
TOTAL AREA	42.81

### APARTMENT 21 (TYPE 2+1\_A)

AREA NAME	sq.m.
LIVING AREA	74.76
SUMMER AREA	40.18
TOTAL AREA	114.94

### APARTMENT 20 (TYPE 1+0\_E)

AREA NAME	sq.m.
LIVING AREA	23.18
SUMMER AREA	9.45
TOTAL AREA	32.63



### APARTMENT 28 (TYPE 1+0\_D)

AREA NAME	sq.m.
LIVING AREA	24.32
SUMMER AREA	9.45
TOTAL AREA	33.77

### APARTMENT 29 (TYPE 2+1\_B)

AREA NAME	sq.m.
LIVING AREA	70.27
SUMMER AREA	40.18
TOTAL AREA	110.45

### APARTMENT 15 (TYPE 1+0\_F')

AREA NAME	sq.m.
LIVING AREA	40.54
SUMMER AREA	18.90
TOTAL AREA	59.44

### APARTMENT 16 (TYPE 1+0\_B)

AREA NAME	sq.m.
LIVING AREA	32.90
SUMMER AREA	9.45
TOTAL AREA	42.35

### APARTMENT 17 (TYPE 1+0\_A)

AREA NAME	sq.m.
LIVING AREA	33.36
SUMMER AREA	9.45
TOTAL AREA	42.81

### APARTMENT 18 (TYPE 2+1\_A)

AREA NAME	sq.m.
LIVING AREA	74.76
SUMMER AREA	40.18
TOTAL AREA	114.94

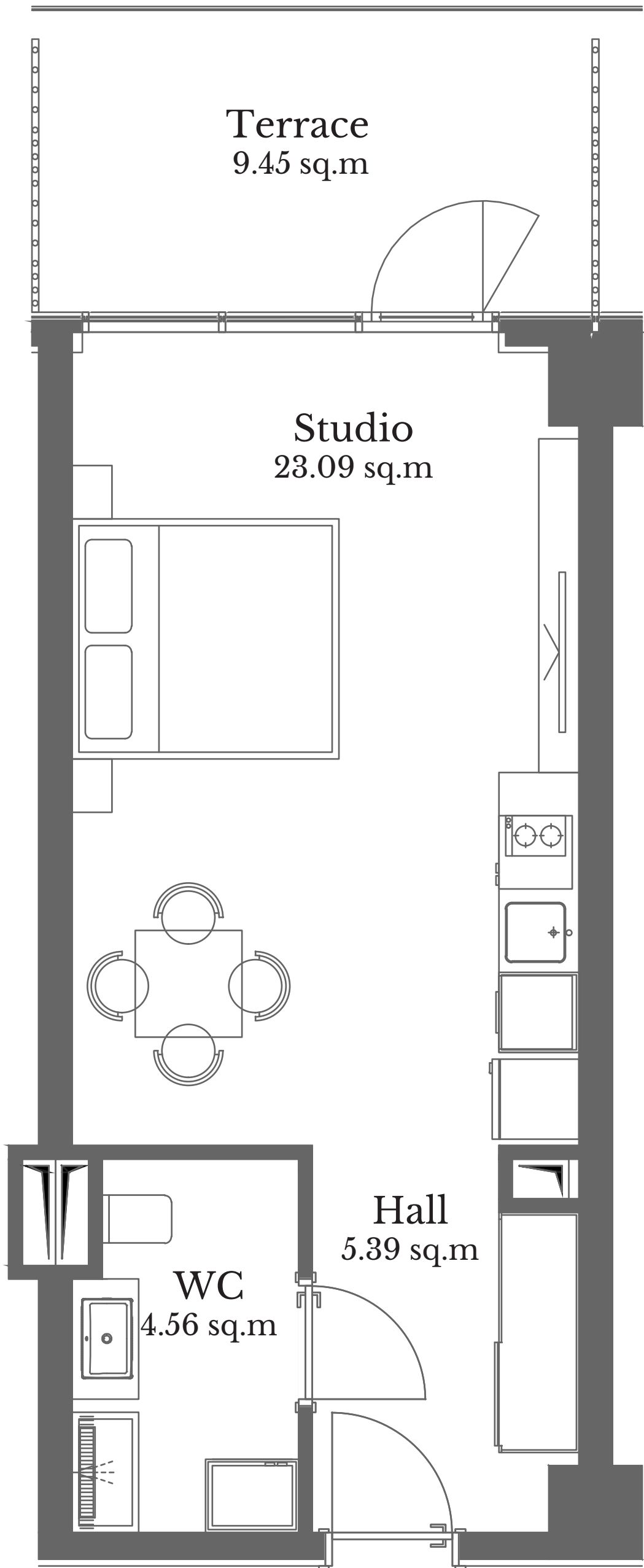
### APARTMENT 19 (TYPE 1+0\_E)

AREA NAME	sq.m.
LIVING AREA	23.18
SUMMER AREA	9.45
TOTAL AREA	32.63

Level 04 - Level 11 Floors With Identical Floor Plan



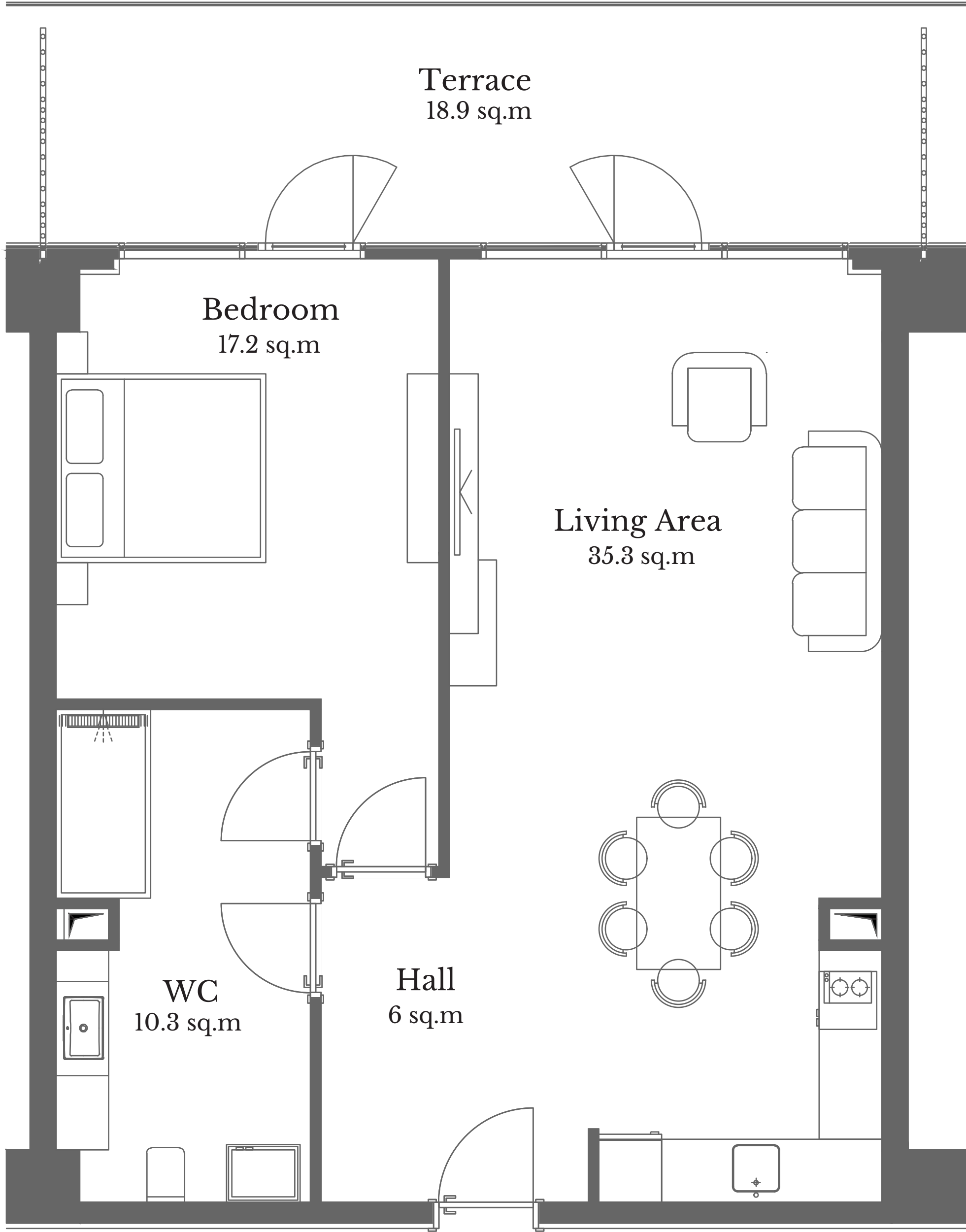
# STUDIO



APARTMENT N 8	
Living Area	33.04 sq.m
Terrace	9.45 sq.m
Total	42.49 sq.m



# ONE-BEDROOM



APARTMENT N 9,10	
Living Area	70.30 sq.m
Terrace	18.90 sq.m
Total	89.2 sq.m



# TWO-BEDROOM



APARTMENT N 26	
Living Area	74.76 sq.m
Terrace	40.18 sq.m
Total	114.94 sq.m





# KRTSANISI

RESORT RESIDENCE

+995 599 26 11 11

+995 322 50 11 11

Sales@vr.ge

WWW.VR.GE

WWW.VRKRTSANISI.COM

N7 Grigol Volski Street, Tbilisi, Georgia

N37/39 Merab Kostava Street, Tbilisi, Georgia